



engineers | scientists | innovators

2025 ANNUAL GROUNDWATER MONITORING REPORT

INCREMENT ONE LANDFILL – SEMINOLE GENERATING STATION

Prepared for

Seminole Electric Cooperative, Inc.

16313 North Dale Mabry Highway
Tampa, Florida 33618

Prepared by

Geosyntec Consultants, Inc.
4595 Broadmoor Ave SE, Suite 190
Grand Rapids, MI 49512

Project GLW8083A

29 January 2026

2025 Annual Groundwater Monitoring Report

Increment One Landfill – Seminole Generating Station

This 2025 Annual Groundwater Monitoring Report for Increment One Landfill at Seminole Generating Station has been prepared to meet the requirement of 40 Code of Federal Regulations §257.90(e).

Prepared for:

Seminole Electric Cooperative, Inc.
16313 North Dale Mabry Highway
Tampa, Florida 33618

Prepared by:

Geosyntec Consultants, Inc.
4595 Broadmoor Ave SE, Suite 190
Grand Rapids, MI 49512



Samuel F. Stafford, P.E.(FL, MI, NM)
Senior Engineer

Glenn R. Carwell, P.E.(FL, GA, VA), CHMM
Principal Engineer

Project Number: GLW8083A
29 January 2026

EXECUTIVE SUMMARY

In general accordance with the Coal Combustion Residual (CCR) Rule¹, this 2025 Annual Groundwater Monitoring and Corrective Action Report documents CCR unit groundwater monitoring activities completed at Increment One landfill (Increment 1) at the Seminole Electric Cooperative, Inc. (Seminole) Seminole Generating Station (SGS) in Palatka, Florida, as required by §257.90(e).

Pursuant to §257.94(b), Seminole initiated background monitoring in May 2016 to collect a minimum of eight independent samples before October 2017. Detection monitoring for Appendix III constituents was initiated in October 2017. A statistical evaluation following the October 2017 event (including verification sampling in November 2017) identified Statistically Significant Increases (SSIs) of certain Appendix III constituents (boron, calcium, chloride, sulfate, and total dissolved solids [TDS]) in groundwater samples from downgradient monitoring wells.

Following the SSI determination, Seminole prepared an Alternate Source Evaluation (Golder, 2018) identifying multiple lines of evidence including the underlying test cells, an adjacent flue gas desulfurization (FGD) landfill, and adjacent process waste ponds as potential sources for Appendix III constituents in groundwater at Increment 1. Groundwater monitoring at Increment 1 under the CCR Rule has therefore remained in the detection monitoring phase.

¹ 40 Code of Federal Regulations Part 257 (40 CFR 257), Subpart D – Standard for Disposal of Coal Combustion Residuals and Surface Impoundments, as amended.

TABLE OF CONTENTS

EXECUTIVE SUMMARYIII

1. INTRODUCTION1

 1.1 Background1

 1.2 Site Hydrogeology.....1

 1.3 CCR Groundwater Monitoring Well Network.....2

2. CCR GROUNDWATER MONITORING ACTIVITIES3

 2.1 Groundwater Monitoring Status3

 2.2 Monitoring Well Installation and Decommissioning3

 2.3 Groundwater Sampling Activities3

 2.4 Groundwater Sampling Methodology4

3. CCR GROUNDWATER DATA EVALAUTION5

 3.1 Groundwater Flow Rate and Direction5

 3.2 Established Background Groundwater Quality Standards5

 3.3 Detection Monitoring Statistical Analysis6

 3.3.1 October 2024 Monitoring Event Statistical Analysis Evaluation6

 3.3.2 June 2025 Monitoring Event Statistical Analysis Evaluation7

4. CONCLUSIONS8

5. REFERENCES9

LIST OF TABLES

Table 1:	Monitoring Well Construction Details
Table 2:	2025 Groundwater Sampling Summary
Table 3:	Detection Monitoring Laboratory Results (Attached)
Table 4:	Groundwater Elevation Measurement Summary
Table 5:	Appendix III Background Limits
Table 6:	October 2024 Statistical Evaluation Summary
Table 7:	June 2025 Statistical Evaluation Summary

LIST OF FIGURES

Figure 1:	Increment 1 Groundwater Monitoring Network
-----------	--

LIST OF APPENDICIES

Appendix A:	2025 Laboratory Analytical Results
-------------	------------------------------------

1. INTRODUCTION

On behalf of Seminole Electric Cooperative, Inc. (Seminole), Geosyntec Consultants, Inc. (Geosyntec) prepared this *2025 Annual Groundwater Monitoring Report* (Annual Report) for Increment One at Seminole Generating Station (Increment 1). This Annual Report has been prepared to meet the requirements of the United States Environmental Protection Agency (USEPA) Coal Combustion Residual (CCR) Rule §257.90(e).

1.1 Background

Increment 1 is an active CCR management unit located at the Seminole Generating Station (SGS) in Palatka, Florida. The facility is owned and operated by Seminole. Increment 1 primarily receives fly ash, a byproduct of coal combustion, and encompasses approximately 27 acres in the north-central portion of the SGS. The unit is situated north-northeast of the main plant, adjacent to a closed landfill (the former FGD landfill) that previously received FGD sludge, fly ash, and other materials, and east of process water ponds used for electric power generation operations.

Construction of Increment 1 occurred in phases between 2011 and 2017, with fill operations commencing in April 2013. The design features of Increment 1 include a double-liner system placed over compacted base material, a leachate collection system, and a leak detection layer draining to a sump at the northeast end of the unit. Berms surround the perimeter, with stormwater retention ponds located beyond the berms to the east and south, and lined process water ponds to the west. The former FGD landfill abuts the north and west sides of Increment 1.

1.2 Site Hydrogeology

Two principal aquifer systems underlie Increment 1: the surficial aquifer and the Floridan aquifer. The surficial aquifer system is subdivided into two permeable zones separated by a relatively low-permeability clayey layer (shallow confining unit) approximately 5 to 15 feet thick. The upper part, referred to as the shallow surficial aquifer, consists mainly of sandy sediments and is approximately 25 to 50 feet thick. The lower part, the deep surficial aquifer, also consists of sandy sediments and is approximately 10 to 25 feet thick. The surficial aquifer system is separated from the upper Floridan aquifer by clayey deposits of the Hawthorn Group.

Groundwater flow in the shallow surficial aquifer at Increment 1 is generally toward the east and northeast, with a reported velocity of approximately 200 feet per year. In the deep surficial aquifer, the flow direction is more northerly, with a velocity of approximately 80 feet per year. The head difference between the shallow and deep surficial aquifers ranges from about 9 feet downward to 5 feet upward.

Based on monitoring data and application of Darcy's law, the average hydraulic gradient at Increment 1 is 0.0105 feet per foot (ft/ft), and the average groundwater velocity is 0.24 feet per day (ft/day). Variations in groundwater velocities are influenced by hydrogeology, precipitation, groundwater withdrawals, and changes in topography or surface features over time.

1.3 CCR Groundwater Monitoring Well Network

The CCR groundwater monitoring well network for Increment 1 consists of three background wells (MW-3A, MW-5A, and MW-41AR) and four downgradient wells (MW-19, MW-20, MW-21, and MW-22). The background wells are not hydraulically upgradient of Increment 1. The downgradient wells are located as close as practical to the waste boundary along the downgradient perimeter of the unit to represent groundwater quality passing the waste boundary. All wells in the CCR network are screened in the shallow surficial aquifer (uppermost aquifer).

There is one upgradient well (MW-18) that is not part of the CCR groundwater monitoring well network but is used to evaluate upgradient groundwater conditions. The upgradient well is installed adjacent to former Test Cell E, and it is hydraulically upgradient of Increment 1 for the uppermost aquifer. The monitoring well locations are shown on **Figure 1**, and well construction details are summarized in **Table 1**.

Table 1: Monitoring Well Construction Details

Well ID	Date Installed	Easting (ft NAD83)	Northing (ft NAD83)	TOC Elevation (ft NGVD29)	Well Depth (ft bgs)	Screen Interval (ft bgs)
MW-3A	4/26/2016	457904.86	1969720.02	32.01	21.00	10.50 - 20.50
MW-5A	4/26/2016	457978.10	1968592.23	31.90	28.00	17.50 - 27.50
MW-41R	4/18/2008	457177.04	1964474.49	83.31	20.50	15.00 - 20.00
MW-19	11/29/2011	457014.63	1965339.54	76.31	21.28	10.95 - 20.95
MW-20	11/30/2011	457321.26	1965738.22	76.59	27.52	17.19 - 27.19
MW-21	12/1/2011	457558.66	1966166.98	76.44	26.99	16.66 - 26.66
MW-22	12/1/2011	457386.18	1966549.77	72.91	26.05	15.72 - 25.72
MW-18 ¹	11/30/2011	456278.56	1965193.03	85.38	22.23	11.90 - 21.90

Notes:

1. Well MW-18 is not part of the CCR Rule groundwater monitoring network but is used to evaluate upgradient groundwater conditions.

TOC – Top of Casing

ft bgs – feet below ground surface

NAD83 – Horizontal Control: North American Datum of 1983, State Plane Coordinate System Florida, East Zone

NGVD29 – National Geodetic Vertical Datum of 1929

2. CCR GROUNDWATER MONITORING ACTIVITIES

2.1 Groundwater Monitoring Status

Seminole conducted the initial CCR Rule detection monitoring event in October 2017. Statistical evaluation identified Statistically Significant Increases (SSIs) above background for boron, calcium, sulfate, and TDS at MW-19 through MW-22, and an SSI for chloride at MW-19. In accordance with §257.94(e), Seminole completed an Alternate Source Evaluation demonstrating that sources other than Increment 1 caused the observed SSIs.

On 29 May 2025, updated Appendix III background groundwater quality limits were established for Increment 1 using an intra-well approach (with inter-well limits for pH) to be applied in routine detection monitoring evaluations going forward (Geosyntec 2025C). The updated statistical framework uses a 1-of-2 prediction limit scheme (except for fluoride, which applies the double-quantification rule at the laboratory practical quantitation limit [PQL]), verification sampling is required when an initial semiannual result exceeds a background limit (or is below the lower limit for pH), and an SSI occurs only if both the initial and verification results exceed the applicable limit.

2.2 Monitoring Well Installation and Decommissioning

No monitoring well installation or decommissioning activities occurred in 2025.

2.3 Groundwater Sampling Activities

During this reporting period, Increment 1 remained under CCR Rule detection monitoring for Appendix III parameters (boron, calcium, chloride, fluoride, pH, sulfate, and TDS). The updated statistical approach for background limits was applied, including verification sampling procedures when initial results exceeded established limits. A summary of the groundwater sampling activities is provided in **Table 2** (below). The laboratory analytical results are summarized in **Table 3** (attached) and laboratory analytical reports are provided in **Appendix A**.

Table 2: 2025 Groundwater Sampling Summary

Well ID	June 2025 Detection Monitoring Event	June 2025 Verification Monitoring Event	October 2025 Detection Monitoring Event	January 2026 Verification Monitoring Event
MW-3A	6/4/2025	NS	10/30/2025	NS
MW-5A	6/4/2025	NS	10/30/2025	NS
MW-41R	6/4/2025	NS	10/30/2025	NS
MW-19	6/3/2025	NS	10/30/2025	NS
MW-20	6/3/2025	NS	10/30/2025	NS
MW-21	6/3/2025	6/20/2025	10/30/2025	NS
MW-22	6/3/2025	6/20/2025	10/30/2025	1/7/2026
MW-18 ¹	6/3/2025	NS	10/30/2025	NS

Note:

1. Well MW-18 is not part of the CCR groundwater monitoring well network but is used to evaluate upgradient groundwater conditions.

NS indicates a sample was not collected

2.4 Groundwater Sampling Methodology

Monitoring wells are purged and sampled using low-flow sampling methodologies. Prior to purging, the depth to groundwater is measured for each well using an electric water level indicator. The monitoring wells are purged and sampled via peristaltic pump. Calibrated water quality meters are used to monitor field stabilization parameters, including pH, specific conductance, temperature, dissolved oxygen, oxidation-reduction potential, and turbidity. After the water quality parameters stabilize, groundwater samples are collected and placed into iced coolers under chain-of-custody control pending delivery to the laboratory. Following sample collection, the samples are delivered to the Advanced Environmental Laboratories, Inc. Jacksonville laboratory for analysis.

3. CCR GROUNDWATER DATA EVALAUTION

3.1 Groundwater Flow Rate and Direction

Prior to each groundwater sampling event, the depth to groundwater is measured at all monitoring wells in the Increment 1 network. Groundwater elevation data collected during the 2025 sampling events are summarized in **Table 4**. The hydraulic gradient and direction of groundwater flow are calculated for each event using the least-squares method. For the reporting period, the average hydraulic gradient was 0.0105 ft/ft, with groundwater flow generally directed toward the east and northeast within the shallow surficial aquifer.

Table 4: 2025 Groundwater Elevation Measurement Summary

Well ID	June 2025		October, 2025	
	Depth to Water (ft TOC)	Groundwater Elevation (ft NGVD29)	Depth to Water (ft TOC)	Groundwater Elevation (ft NGVD29)
MW-3A	5.46	26.55	5.80	4.75
MW-5A	4.73	27.17	6.62	4.30
MW-41AR	15.75	67.56	6.24	15.30
MW-19	20.00	56.31	11.19	19.50
MW-20	23.10	53.49	10.39	22.90
MW-21	23.42	53.02	8.55	23.20
MW-22	20.43	52.48	8.09	20.20
MW-18 ¹	17.38	68.00	9.93	17.00
Hydraulic Gradient²	1.04 x 10⁻²		1.05 x 10⁻²	
Flow Direction³	49.8		50.7	
Coefficient of Determination	0.964		0.964	

Notes:

1. Well MW-18 is not part of the CCR groundwater monitoring well network but is used to evaluate upgradient groundwater conditions.
2. Hydraulic gradient (ft/ft) from least-squares method of fitting data to a plane.
3. Flow direction reported in degrees from North.

3.2 Established Background Groundwater Quality Standards

Background concentrations for Appendix III parameters have been established according to the Facility's Statistical Analysis Plan for CCR Groundwater Monitoring (Geosyntec 2025B). The background concentrations were established using an intra-well prediction limit approach for each downgradient monitoring well except for pH which was established using inter-well prediction limits (upper and lower) for the Facility's background wells (Geosyntec 2025C).

The established background limits are presented in **Table 5** below:

Table 5: Appendix III Background Limits

Appendix III Parameter	MW-19	MW-20	MW-21	MW-22
Boron	5,397	5,497	10,537	3,599
Calcium	775	528	544	945
Chloride	457	184	377	51
Fluoride	PQL (Double Quantification Rule)			
pH	3.90 – 5.75			
Sulfate	1,533	5,113	1,300	2,333
TDS	3,057	2,213	2,111	3,327

3.3 Detection Monitoring Statistical Analysis

The purpose of the detection monitoring program is to evaluate if there is an SSI relative to background concentrations of Appendix III parameters at any downgradient well. Detection monitoring statistical evaluations are performed in general accordance with the *Statistical Analysis Plan for Increment 1 CCR Groundwater Monitoring* (Geosyntec 2025B). The statistical evaluation of monitoring data is limited to the downgradient wells. The following sections summarize the statistical evaluations completed in the 2025 calendar year (October 2024 and June 2025 sampling events). Note that the statistical evaluation of the October 2025 monitoring event was not completed in 2025.

3.3.1 October 2024 Monitoring Event Statistical Analysis Evaluation

The October 2024 semi-annual detection monitoring event and subsequent December 2024 verification sampling were conducted in accordance with the CCR Rule and the facility’s Statistical Analysis Plan (Geosyntec, 2025A). Analytical results from downgradient wells were compared to previously established background inter-well prediction limits for Appendix III parameters. SSIs were identified for boron, calcium, sulfate, and total dissolved solids at all downgradient wells, and for pH at MW-22. No SSIs were observed for chloride or fluoride.

The statistical evaluation following the October 2024 semi-annual assessment monitoring event is summarized in **Table 6** below.

Table 6: October 2024 Statistical Evaluation Summary

Parameter	Monitoring Wells with SSIs
Boron	MW-19, MW-20, MW-21, MW-22
Calcium	MW-19, MW-20, MW-21, MW-22
Chloride	None
Fluoride	None
pH	MW-22
Sulfate	MW-19, MW-20, MW-21, MW-22
TDS	MW-19, MW-20, MW-21, MW-22

Comparison of upgradient well MW-18 to downgradient wells (MW-19, MW-20, MW-21, and MW-22) including paired well analysis indicated that upgradient concentrations were consistent with those observed downgradient for most parameters. Trend analysis using the Theil-Sen method indicated decreasing or stable trends for most parameters, with no evidence of recent impacts from Increment 1. Statistically significant decreasing trends were identified for boron (MW-19, MW-20, and MW-22), calcium (MW-19 and MW-22), chloride (MW-19, MW-21, and MW-22), sulfate (MW-19, MW-20, and MW-22), and TDS (MW-19, MW-20, and MW-22). The results support the conclusion that Increment 1 was not contributing to groundwater degradation during this monitoring period.

3.3.2 June 2025 Monitoring Event Statistical Analysis Evaluation

The June 2025 semi-annual detection monitoring event and subsequent verification sampling were performed as part of ongoing CCR Rule compliance (Geosyntec, 2025D). Analytical results from downgradient wells were evaluated against background concentrations established using an intra-well prediction limit approach, with inter-well limits for pH. Verification sampling was conducted for parameters exceeding background concentrations. Only pH at MW-21 and MW-22 was detected outside the established background concentrations during this event.

The statistical evaluation following the June 2025 semi-annual assessment monitoring event is summarized in **Table 7** below.

Table 7: June 2025 Statistical Evaluation Summary

Parameter	Monitoring Wells with SSIs
Boron	None
Calcium	None
Chloride	None
Fluoride	None
pH	MW-21 and MW-22
Sulfate	None
TDS	None

Comparison of upgradient well MW-18 to downgradient wells (MW-19, MW-20, MW-21, and MW-22) including paired well analysis indicated that upgradient concentrations were consistent with those observed downgradient for most parameters. Trend analysis using the Theil-Sen method indicated decreasing or stable trends for most parameters, with no evidence of recent impacts from Increment 1. Statistically significant decreasing trends were identified for boron (MW-19, MW-20, and MW-22), calcium (MW-19 and MW-22), chloride (MW-19, MW-21, and MW-22), sulfate (MW-19, MW-20, and MW-22), and TDS (MW-19, MW-20, and MW-22). The evaluation found no evidence that Increment 1 was contributing to groundwater degradation for the monitored parameters during this period.

4. CONCLUSIONS

The detection monitoring to date indicates that Increment 1 is not adversely impacting groundwater quality at Increment 1. In accordance with the CCR Rule, detection monitoring will continue throughout 2026. Routine data evaluation will be performed following each semi-annual detection monitoring event to validate the alternate source demonstration for Increment 1.

5. REFERENCES

Golder Associates, Inc. 2018. Alternate Source Evaluation, Increment 1, Seminole Generating Station, Palatka, FL 32177, April 13, 2018.

Geosyntec Consultants, Inc. 2025A. Groundwater Monitoring Data Evaluation, Detection Monitoring Event – October 2024, Increment 1 – Seminole Generating Station, February 17, 2025.

Geosyntec Consultants, Inc. 2025B. Statistical Analysis Plan, Increment 1 CCR Groundwater Monitoring, Seminole Generating Station, Palatka, Florida, May 2025.

Geosyntec Consultants, Inc. 2025C. Background Groundwater Quality Statistics Update, Increment 1, Seminole Generating Station, May 29, 2025.

Geosyntec Consultants, Inc. 2025D. Groundwater Monitoring Data Evaluation, Detection Monitoring Event – June 2025, Increment 1 – Seminole Generating Station, October 10, 2025.

TABLES

TABLE 3
DETECTION MONITORING LABORATORY RESULTS
Seminole Generating Station
Increment 1

Monitoring Well	Sampling Date	Boron (µg/L)	Calcium (mg/L)	Chloride (mg/L)	Fluoride (mg/L)	pH (SU)	Sulfate (mg/L)	Total Dissolved Solids (mg/L)
MW-3A	10/13/2017	44 I	1.07	10	0.01 I	4.59	7.7	78
	3/15/2018	40 I	1.18	11.5	0.02U	4.06	10	38
	7/31/2018	31 I	1.08	11.9	0.02 U	4.78	7.2	58
	2/11/2019	29 I	1.3	110	0.13 I	4.32	6.3	63
	8/13/2019	24 I	1.1	11	0.076 I	4.4	7.4	63
	4/19/2020	100 U	1.5	9.8	0.05 U	4.69	11	81
	10/5/2020	100 U	1.1	9.2	0.20 U	4.51	8.2	54
	3/23/2021	100 U	1.0	9.8	0.20 U	4.5	6.6 I	23
	12/2/2021	100 U	1.9	9.8	0.20 U	4.35	5.0 I	35
	6/21/2022	100 U	1.1	5.2	0.050 U	4.59	2.2 I	38
	11/2/2022	100 U	1.4	11	0.20 U	4.46	5.6 I	53
	6/27/2023	100 U	2.6	9.4	0.20 U	4.62	4.6 I	50
	10/11/2023	100 U	1.1	7.8 I	0.20 U	4.56	5.4 I	33
	3/13/2024	100 U	1.1	9.9	0.20 U	4.28	5.8 I	66
	10/1/2024	100 U	1.1	10	0.20 U	4.71	11	50
6/4/2025	100 U	1.2	9.2	0.20 U	4.65	4.5 I	72	
10/30/2025	100 U	5.3	19	0.2 U	4.42	6.7 I	85	
MW-5A	10/13/2017	33 I	8.88	17.9	0.08 I	5.54	6.4	88
	3/15/2018	25 U	7.72	17.3	0.05 I	5.13	8.3	28
	7/31/2018	25 U	8.73	19.5	0.08 I	5.66	8.2	86
	2/11/2019	17 U	7.4	110	0.077 I	5.45	3.9 I	76
	8/13/2019	20 U	8	20	0.11 I	5.58	5.8	96
	4/19/2020	100 U	8.4	20	0.31 I	5.6	7.2	83
	10/5/2020	100 U	7.2	20	0.20 U	5.48	6.8 I	85
	3/23/2021	100 U	6.8	19	0.20 U	5.45	6.6 I	65
	12/2/2021	100 U	5.4	19	0.20 U	5.37	6.3 I	62
	6/21/2022	100 U	6.0	9.7	0.050 U	5.51	3.4 I	63
	11/28/2022	100 U	8.1	20	0.20 U	5.39	6.9 I	68
	6/27/2023	100 U	6.8	21	0.20 U	3.98	6.4 I	85
	10/11/2023	100 U	7.7	12	0.20 U	5.59	8.1	69
	3/13/2024	100 U	6.7	20	0.20 U	5.4	8.3	82
	10/1/2024	100 U	6.4	100 U	10 U	5.58	100 U	74
6/4/2025	100 U	6.5	22	0.20 U	5.48	7.5 I	86	
10/30/2025	2200	400	16	0.2 U	5.15	340	520	

TABLE 3
DETECTION MONITORING LABORATORY RESULTS
Seminole Generating Station
Increment 1

Monitoring Well	Sampling Date	Boron (µg/L)	Calcium (mg/L)	Chloride (mg/L)	Fluoride (mg/L)	pH (SU)	Sulfate (mg/L)	Total Dissolved Solids (mg/L)
MW-41AR	10/13/2017	77	7.43	6.6	0.03 I	4.46	23.1	64
	2/23/2018	98	6.81	12.1	0.03 I	4.23	28.5	55
	8/3/2018	97	5.8	13.9	0.03 I	4.33	25.3	46
	2/11/2019	69	5.7	0.50 U	0.050 U	4.17	0.50 U	74
	8/13/2019	52 I	6.2	8.8	0.11 I	4.37	24	67
	4/19/2020	150 I	23	22	0.091 I	6.12	44	100
	10/5/2020	100 U	10	8.3	0.20 U	5.08	28	63
	3/23/2021	100 U	6.5	8.2	0.20 U	4.55	19	65
	12/2/2021	100 U	7.2	13	0.20 U	4.50	25	83
	6/21/2022	100 U	5.5	5.7	0.050 U	4.78	10	61
	11/28/2022	100 U	11	13	0.20 U	4.82	29	68
	6/27/2023	100 U	6.8	9.9	0.20 U	5.51	19	69
	10/11/2023	100 U	9.2	15	0.20 U	5.12	23	71
	3/19/2024	100 I	14	20	0.20 U	4.72	44	95
	10/2/2024	100 U	11	16	0.20 U	4.71	30	79
6/4/2025	120 I	15	25	0.20 U	4.55	43	140	
10/30/2025	100 U	1.2	11	0.2 U	4.87	4 I	63	
MW-19	10/12/2017	1600	664	27.3	0.02 I	6.09	1450	2640
	11/27/2017	7230	464	165	--	5.74	1080	1900
	3/13/2018	1610	259	77	0.06U	6.34	440	848
	5/4/2018	1910	375	79.1	--	6.47	830	1360
	7/27/2018	3270	249	51.9	0.06 U	5.34	595	1060
	9/14/2018	2340	214	31.9	--	5.93	455	782
	2/8/2019	1500	610	120	0.21 I	6.18	3.8 I	2200
	4/4/2019	2500	520	59	--	6.18	--	1900
	8/12/2019	1500	250	43	0.34 I	5.73	570	970
	10/25/2019	1500	220	40	0.25 U	5.45	490	840
	4/19/2020	1100	170	63	0.1 U	5.33	370	660
	8/7/2020	920	130	38	--	6.02	260	600
	10/5/2020	930	180	30	0.40 U	6.26	300	660
	12/4/2020	820	240	24 I	--	5.93	580	920
	4/2/2021	1600	290	64	1.0 U	5.49	600	1100
	7/30/2021	740	280	16	--	6.17	410 V	840
	12/2/2021	2700	510	28 I	2.0 U	5.83	1100	1800
	1/11/2022	2700 I	410	57	--	5.48	990	1380
	6/27/2022	2100	280	47	1.0 U	5.4	590	894
	8/30/2022	1100	180	29 I	--	6.21	330	664
	11/2/2022	1300	620	100 U	10 U	6.31	1400	2400
	11/30/2022	2100	540	--	--	6.24	1200	1800
	6/27/2023	1600	150	18	0.20 U	5.61	180	640
	8/22/2023	1300	130	30	0.40 U	5.96	290	590
	10/12/2023	1400	150	37	0.40 U	5.48	360	620
	11/14/2023	1300	160	34	--	5.63	390	670
	3/13/2024	1600	300	26 I	2.0 U	6.03	950	1600
	10/1/2024	490	150	5.8 I	0.40 U	6.66	230	530
12/10/2024	2400	540	--	--	6.13	960	1800	
6/3/2025	2000	310	44	1.0 U	5.55	630	1200	
10/30/2025	1200	150	27	0.2 U	5.55	310	560	

TABLE 3
DETECTION MONITORING LABORATORY RESULTS
Seminole Generating Station
Increment 1

Monitoring Well	Sampling Date	Boron (µg/L)	Calcium (mg/L)	Chloride (mg/L)	Fluoride (mg/L)	pH (SU)	Sulfate (mg/L)	Total Dissolved Solids (mg/L)
MW-20	10/12/2017	332	102	4.5	0.02 I	6.08	115	344
	12/1/2017	2680	442	--	--	6.12	949	1600
	3/13/2018	2820	591	17	0.2U	6.03	1420	1910
	5/4/2018	2610	491	--	--	4.81	1320	1820
	7/27/2018	3180	440	152	0.06 U	4.53	1050	1870
	9/14/2018	3050	408	107	--	5.21	938	1600
	2/8/2019	1500	310	87	0.24 I	5.97	3.3 I	1100
	4/4/2019	1800	500	47	--	5.73	--	1800
	8/12/2019	2300	420	65	0.50 U	5.26	960	1500
	10/25/2019	1900	380	54	--	4.89	1100	1700
	4/19/2020	2500	500	110	1 U	5.28	1100	1700
	8/7/2020	2500	360	89	--	4.85	890	1600
	10/5/2020	1100	230	10 U	1.0 U	5.83	480	900
	12/4/2020	1600	290	--	--	5.49	760	1100
	4/2/2021	1300	320	10 U	1.0 U	5.15	760	1100
	7/30/2021	450	150	--	--	5.79	390	570
	12/3/2021	1700	350	78 I	2.0 U	5.15	940	1260
	1/11/2022	2000 I	470	84	--	5.24	1000	2020
	6/27/2022	2600	460	130	2.0 U	5.04	990	1550
	8/30/2022	640	160	17	--	5.99	260	549
	10/31/2022	1200	400	20 U	2.0 U	5.91	850	1300
	11/30/2022	1200	520	--	--	5.96	910	1600
	6/27/2023	2400	200	140	2.0 U	4.68	970	1700
	8/22/2023	2000	340	92	2.0 U	5.38	920	1400
	10/12/2023	2100	410	92	2 U	4.79	1100	1500
	11/14/2023	2000	430	57 I	--	5.19	1100	1500
	3/13/2024	1000	390	14 I	0.40 U	5.89	950	1500
	10/2/2024	360 I	130	4.0 U	0.40 U	6.27	230	460
12/9/2024	410	320	--	--	6.3	540	1000	
6/3/2025	2300	380	120	1.0 U	5.05	770	1500	
10/30/2025	230 I	120	90	1 U	4.81	910	1400	

TABLE 3
DETECTION MONITORING LABORATORY RESULTS
Seminole Generating Station
Increment 1

Monitoring Well	Sampling Date	Boron (µg/L)	Calcium (mg/L)	Chloride (mg/L)	Fluoride (mg/L)	pH (SU)	Sulfate (mg/L)	Total Dissolved Solids (mg/L)
MW-21	10/12/2017	1570	254	4.4 I	0.02 U	6.20	475	896
	12/1/2017	962	228	--	--	5.94	501	855
	3/13/2018	4410	340	37.5	0.06U	6.01	812	1220
	5/4/2018	3610	281	14.5	--	5.94	720	1030
	7/31/2018	4210	351	29.3	0.06 U	5.7	909	1430
	9/14/2018	3690	278	16.8	NA	5.53	662	1040
	2/8/2019	6000	410	92	0.050 U	5.94	18	1500
	4/4/2019	4000	340	8.6 I	--	5.96	--	1300
	8/12/2019	3400	430	5.0 U	0.50 U	5.91	970	1500
	10/25/2019	4900	530	--	--	5.57	1300	1900
	4/19/2020	2800	490	11 I	1.4 I	4.81	1300	1800
	8/7/2020	4300	460	--	2.0 U	5.39	1300	2000
	10/5/2020	6200	460	40 U	4.0 U	5.69	1200	2000
	12/4/2020	6000	440	--	--	6.04	1200	1700
	4/2/2021	2700	390	10 U	1.0 U	5.96	690	1200
	7/30/2021	6100	540	--	--	5.78	1300	1600
	12/3/2021	360 I	150	4.0 U	0.40 U	5.47	390	594
	1/11/2022	900	210	--	--	5.47	470	719
	6/28/2022	2600	350	10 U	1.0 U	5.71	840	1060
	8/23/2022	6200	350	--	--	6.05	960	1420
	10/31/2022	960	220	4.2 I	0.40 U	5.87	470	800
	12/31/2022	4700	410	--	--	5.90	860	1500
	6/27/2023	4700	410	20 U	2.0 U	5.53	1100	1600
	8/22/2023	4100	370	10 U	1.0 U	5.70	990	1500
	10/12/2023	5300	430	20 U	2.0 U	5.54	1200	1700
	11/15/2023	7600	490	--	--	5.67	1400	1700
	3/13/2024	3300	480	10 U	1.0 U	5.84	830	1300
	10/2/2024	390	190	20 U	2.0 U	6.92	950	1400
	12/9/2024	1700	290	--	--	6.01	540	940
	6/3/2025	3800	450	20 U	2.0 U	5.81	1100	1600
6/20/2025	--	--	--	--	5.77	--	--	
10/30/2025	5200	350	10 U	1 U	5.38	1100	1700	

TABLE 3
DETECTION MONITORING LABORATORY RESULTS
Seminole Generating Station
Increment 1

Monitoring Well	Sampling Date	Boron (µg/L)	Calcium (mg/L)	Chloride (mg/L)	Fluoride (mg/L)	pH (SU)	Sulfate (mg/L)	Total Dissolved Solids (mg/L)
MW-22	10/12/2017	3650	411	19.6	0.02 U	5.31	960	1590
	12/1/2017	932	222	--	--	5.88	550	858
	3/13/2018	1000	307	24	0.06U	5.97	772	1090
	5/4/2018	4780	533	18.9	--	6.47	1190	1880
	7/31/2018	1860	275	26.3	0.06 U	5.64	696	1100
	9/14/2028	3190	486	17.2	--	6.11	1090	1750
	2/8/2019	1600	300	67	0.050 U	6.12	34	1100
	4/4/2019	1000	220	17 I	--	5.89	--	840
	8/12/2019	860	190	16 I	0.25 U	5.99	510	810
	10/25/2019	530	260	--	--	6.13	570	910
	4/19/2020	1300	350	7.1 I	0.5 U	5.13	910	1400
	8/7/2020	1100	290	--	--	6.24	730	1200
	10/5/2020	710	310	23 I	2.0 U	6.33	780	1200
	12/4/2020	920	200	--	--	6.43	480	780
	4/2/2021	820	270	17 I	1.0 U	6.4	640	1100
	7/30/2021	640	97	--	--	6.32	200 V	370
	12/2/2021	1300	310	20 U	2.0 U	6.49	600	937
	1/11/2022	1000	170	--	--	6.52	470	842
	6/27/2022	1300 I	370	20 U	2.0 U	6.59	780	1310
	8/23/2022	2100	110	--	--	6.73	190	464
	10/31/2022	580	170	18	0.40 U	6.65	250	590
	12/31/2022	810	190	--	--	6.58	310	660
	6/27/2023	2100	430	20 U	2.0 U	6.59	1000	1700
	8/22/2023	580	240	14 I	1.0 U	6.77	470	800
	10/12/2023	970	320	15 I	1.0 U	6.80	690	1100
	11/15/2023	1100	360	--	--	6.85	750	1200
	3/19/2024	1200	54	59	1.0 U	6.81	1200	1300
	10/2/2024	670	170	15 I	1.0 U	7.10	390	680
	12/10/2024	830	230	--	--	6.81	380	760
	6/3/2025	1700	270	23 I	2.0 U	6.92	1100	930
6/20/2025	--	--	--	--	6.96	--	--	
10/30/2025	1800	300	15 I	0.4 U	6.69	680	1200	
1/7/2026	--	--	--	--	7.06	--	--	

TABLE 3
DETECTION MONITORING LABORATORY RESULTS
Seminole Generating Station
Increment 1

Monitoring Well	Sampling Date	Boron (µg/L)	Calcium (mg/L)	Chloride (mg/L)	Fluoride (mg/L)	pH (SU)	Sulfate (mg/L)	Total Dissolved Solids (mg/L)
MW-18	12/29/2011	4240	--	48	--	5.04	832	--
	12/14/2012	4280	--	41.4	--	5.38	854	--
	6/20/2013	2630	--	21.4	--	6.1	1160	--
	12/9/2013	3060	--	31.4	--	5.78	670	--
	5/19/2014	3220	--	61	--	6.14	961	--
	11/11/2014	5810	--	37.8	--	6.31	1160	--
	5/15/2015	--	--	--	--	5.51	710	1360
	11/6/2015	--	--	--	--	5.55	605	1030
	6/9/2016	--	--	--	--	5.02	446	668
	8/29/2016	--	--	--	--	4.96	631	1010
	5/11/2017	--	--	--	--	4.79	571	868
	8/11/2017	--	--	--	--	4.82	429	690
	10/12/2017	1500	369	9	0.02 U	6.61	787	1280
	3/13/2018	3190	382	51.9	0.06 U	6.03	888	1320
	9/14/2018	2130	387	47	0.06 U	5.73	905	1390
	2/8/2019	1200	480	110	0.15	5.9	4.6	1800
	8/12/2019	920	280	24	0.34	5.44	790	1200
	4/19/2020	500	300	13	0.25 U	4.81	720	1000
	10/6/2020	690	330	20 U	2 U	5.71	820	1300
	4/2/2021	590	340	12	1 U	5.13	720	1100
	12/2/2021	710	310	20 U	2 U	5.38	730	961
	6/27/2022	500	320	14	1 U	5.12	740	1050
	11/2/2022	890	380	25	2 U	6.19	890	1400
	8/22/2023	640	250	14 I	1.0 U	5.16	730	1100
	10/11/2023	500	250	12 I	1.0 U	4.91	670	980
3/13/2024	470	68	13 I	1.0 U	5.18	670	1000	
10/1/2024	830	230	--	--	6.81	380	760	
6/3/2025	440	230	10 I	1.0 U	4.92	540	840	
10/30/2025	860	230	26	0.2 U	5.09	520	820	

Notes:

mg/L - milligrams per liter

µg/L - micrograms per liter

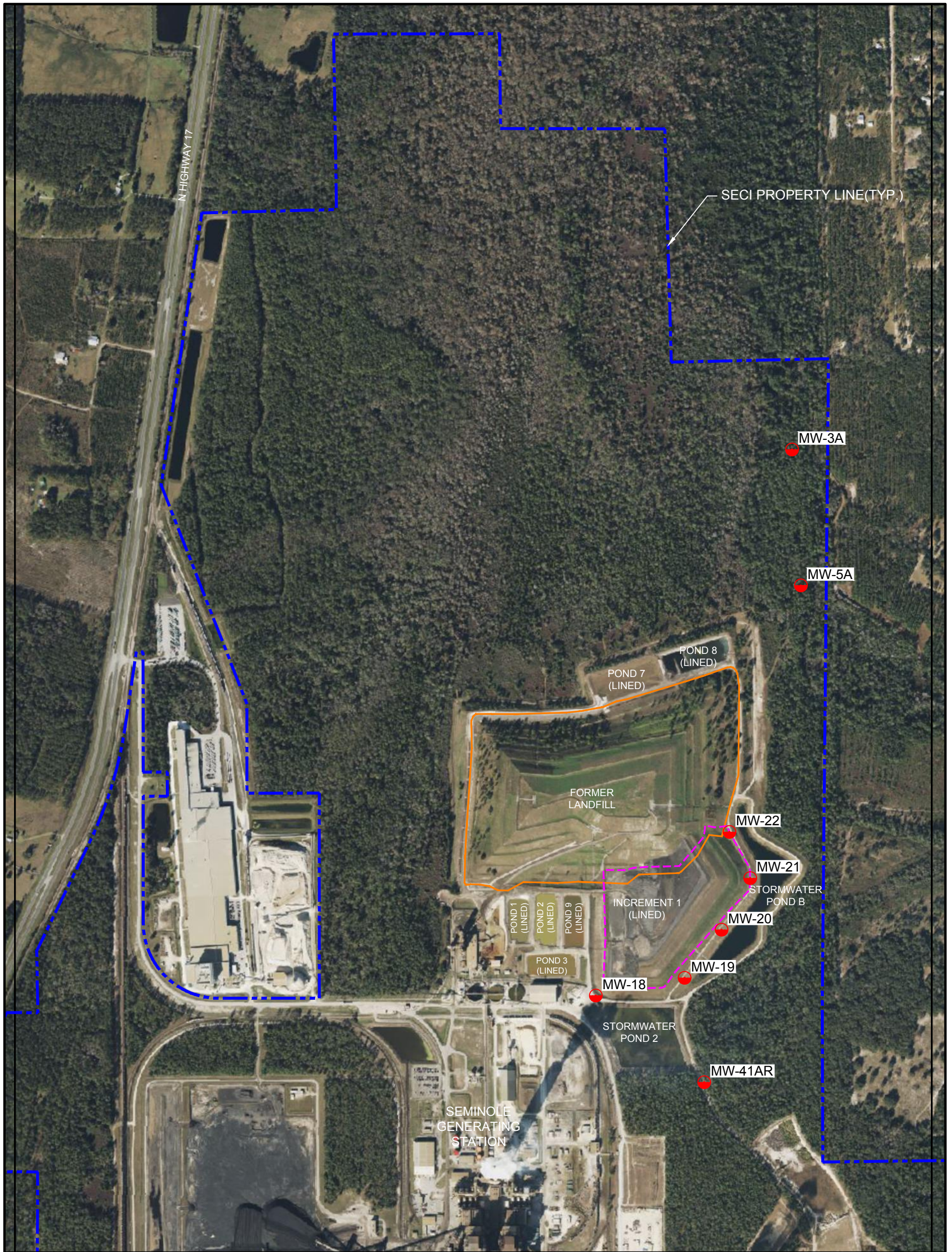
SU - standard units

U - Result less than method detection limit




I - Reported value is between method detection limit and practical quantification limit

V - Method blank contamination

FIGURES

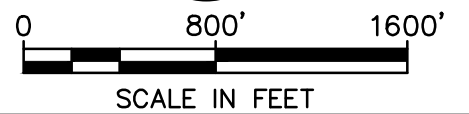



LEGEND

-  SECI PROPERTY
-  APPROXIMATE LIMIT OF FORMER LANDFILL (ORIGINAL BOUNDARY)
-  APPROXIMATE LIMIT OF INCREMENT 1 (LINED)

NOTE:

1. AERIAL IMAGE IS OBTAIN THROUGH NEARMAP IMAGERY SERVICES, DATED NOVEMBER 19, 2023.



INCREMENT I GROUNDWATER MONITORING NETWORK SEMINOLE GENERATING STATION U.S. 17, PALATKA, FL	
	FIGURE 1
PROJECT NO: GLW8083	FEBRUARY 2025

APPENDIX A

2025 Laboratory Analytical Results



Advanced Environmental Laboratories, Inc
6681 Southpoint Pkwy Jacksonville, FL 32216
Payments: P.O. Box 551580 Jacksonville, FL 32255-1580
Phone: (904) 363-9350
Fax: (904) 363-9354

FINAL - REVISION

Workorder: CCR Compliance Sampling (J2508590)

June 18, 2025

Micheal Rogero
Seminole Electric Cooperative, Inc.
890 Highway 17 North
Palatka, FL 32177

RE: Workorder: J2508590 CCR Compliance Sampling

Dear Micheal Rogero:

Enclosed are the analytical results for sample(s) received by the laboratory on Thursday June 5, 2025. Results reported herein conform to the most current NELAC standards, where applicable, unless otherwise narrated in the body of the report. The analytical results for the samples contained in this report were submitted for analysis as outlined by the Chain of Custody and results pertain only to these samples.

If you have any questions concerning this report, please feel free to contact me.

Sincerely,

Jerry Allen, Client Services Manager
JAllen@aellab.com

Certificate of Analysis

This report shall not be reproduced, except in full,
without the written consent of Advanced Environmental Laboratories, Inc.





FINAL - REVISION

Workorder: CCR Compliance Sampling (J2508590)

Sample Summary

Lab ID	Sample ID	Matrix	Method	Date Collected	Date Received	Analytes Reported	Basis
J2508590001	25-308 MW-18	WA	EPA 200.7	06/03/2025 09:34	06/05/2025 14:51	2	NA
J2508590001	25-308 MW-18	WA	EPA 300.0	06/03/2025 09:34	06/05/2025 14:51	3	NA
J2508590001	25-308 MW-18	WA	SM 2540 C-2015	06/03/2025 09:34	06/05/2025 14:51	1	NA
J2508590002	25-309 MW-19	WA	EPA 200.7	06/03/2025 10:29	06/05/2025 14:51	2	NA
J2508590002	25-309 MW-19	WA	EPA 300.0	06/03/2025 10:29	06/05/2025 14:51	3	NA
J2508590002	25-309 MW-19	WA	SM 2540 C-2015	06/03/2025 10:29	06/05/2025 14:51	1	NA
J2508590003	25-310 MW-20	WA	EPA 200.7	06/03/2025 11:20	06/05/2025 14:51	2	NA
J2508590003	25-310 MW-20	WA	EPA 300.0	06/03/2025 11:20	06/05/2025 14:51	3	NA
J2508590003	25-310 MW-20	WA	SM 2540 C-2015	06/03/2025 11:20	06/05/2025 14:51	1	NA
J2508590004	25-311 MW-21	WA	EPA 200.7	06/03/2025 13:20	06/05/2025 14:51	2	NA
J2508590004	25-311 MW-21	WA	EPA 300.0	06/03/2025 13:20	06/05/2025 14:51	3	NA
J2508590004	25-311 MW-21	WA	SM 2540 C-2015	06/03/2025 13:20	06/05/2025 14:51	1	NA
J2508590005	25-312 MW-22	WA	EPA 200.7	06/03/2025 14:10	06/05/2025 14:51	2	NA
J2508590005	25-312 MW-22	WA	EPA 300.0	06/03/2025 14:10	06/05/2025 14:51	3	NA
J2508590005	25-312 MW-22	WA	SM 2540 C-2015	06/03/2025 14:10	06/05/2025 14:51	1	NA
J2508590006	25-314 MW-3A	WA	EPA 200.7	06/04/2025 09:42	06/05/2025 14:51	2	NA
J2508590006	25-314 MW-3A	WA	EPA 300.0	06/04/2025 09:42	06/05/2025 14:51	3	NA
J2508590006	25-314 MW-3A	WA	SM 2540 C-2015	06/04/2025 09:42	06/05/2025 14:51	1	NA
J2508590007	25-315 MW-5A	WA	EPA 200.7	06/04/2025 10:14	06/05/2025 14:51	2	NA
J2508590007	25-315 MW-5A	WA	EPA 300.0	06/04/2025 10:14	06/05/2025 14:51	3	NA
J2508590007	25-315 MW-5A	WA	SM 2540 C-2015	06/04/2025 10:14	06/05/2025 14:51	1	NA
J2508590008	25-316 MW-41AR	WA	EPA 200.7	06/04/2025 10:53	06/05/2025 14:51	2	NA
J2508590008	25-316 MW-41AR	WA	EPA 300.0	06/04/2025 10:53	06/05/2025 14:51	3	NA
J2508590008	25-316 MW-41AR	WA	SM 2540 C-2015	06/04/2025 10:53	06/05/2025 14:51	1	NA

Certificate of Analysis

This report shall not be reproduced, except in full,
 without the written consent of Advanced Environmental Laboratories, Inc.





FINAL - REVISION

Workorder: CCR Compliance Sampling (J2508590)

Workorder Summary

Task Comments

J2508590004 (25-311 MW-21) - WCAj/19445 - IC,E300.0,Water

J2508590004 was analyzed at dilution due to high conductivity. The lowest possible dilution was performed to prevent damage to the instrument.

J2508590005 (25-312 MW-22) - WCAj/19445 - IC,E300.0,Water

J2508590005 was analyzed at dilution due to high conductivity. The lowest possible dilution was performed to prevent damage to the instrument.

Analysis Results Comments

J2508590001 (25-308 MW-18) - Calcium

The matrix spike (MS) and/or matrix spike duplicate (MSD) recoveries of Calcium for J2508590001 were outside control criteria. Recoveries in the Laboratory Control Sample (LCS) were acceptable, which indicates the analytical batch was in control. The data was flagged accordingly.

J2508590002 (25-309 MW-19) - Fluoride

J2508590002 was analyzed at dilution due to high conductivity. The lowest possible dilution was performed to prevent damage to the instrument.

J2508590003 (25-310 MW-20) - Fluoride

J2508590003 Was analyzed at dilution due to high conductivity. The lowest possible dilution was performed to prevent damage to the instrument.

Certificate of Analysis

This report shall not be reproduced, except in full,
without the written consent of Advanced Environmental Laboratories, Inc.





FINAL - REVISION

Workorder: CCR Compliance Sampling (J2508590)

Analytical Results Qualifiers

Parameter Qualifiers

- U The compound was analyzed for but not detected.
- I The reported value is between the laboratory method detection limit and the laboratory practical quantitation limit.
- J4 Estimated Result

Lab Qualifiers

- J DOH Certification #E82574 (FL NELAC) AEL-Jacksonville
 DOD-ELAP Certification #L23-514 (ISO/IEC 17025:2017) AEL-Jacksonville





FINAL - REVISION

Workorder: CCR Compliance Sampling (J2508590)

Analytical Results

Parameter	Results	Units	PQL	MDL	DF	Prepared	Analyzed	Lab
Lab ID: J2508590001 Date Collected: 06/03/2025 09:34 Matrix: Water								
Sample ID: 25-308 MW-18 Date Received: 06/05/2025 14:51								
METALS (EPA 200.7)								
Boron	0.44	mg/L	0.40	0.10	1	06/10/2025 11:21	06/10/2025 19:29	J
Calcium	230	mg/L	1.6	0.40	2	06/10/2025 11:21	06/11/2025 16:19	J
WET CHEMISTRY (EPA 300.0)								
Chloride	10 I	mg/L	40	10	5	06/17/2025 17:22	06/17/2025 17:22	J
Fluoride	1.0 U	mg/L	4.0	1.0	5	06/17/2025 17:22	06/17/2025 17:22	J
Sulfate	540	mg/L	40	10	5	06/17/2025 17:22	06/17/2025 17:22	J
WET CHEMISTRY (SM 2540 C-2015)								
Total Dissolved Solids	840	mg/L	10	10	1	06/09/2025 17:27	06/09/2025 17:27	J

Analysis Results Comments

Calcium

J4|Estimated Result





FINAL - REVISION

Workorder: CCR Compliance Sampling (J2508590)

Analytical Results

Parameter	Results	Units	PQL	MDL	DF	Prepared	Analyzed	Lab
Lab ID: J2508590002 Date Collected: 06/03/2025 10:29 Matrix: Water								
Sample ID: 25-309 MW-19 Date Received: 06/05/2025 14:51								
METALS (EPA 200.7)								
Boron	2.0	mg/L	0.40	0.10	1	06/10/2025 11:21	06/10/2025 19:43	J
Calcium	310	mg/L	1.6	0.40	2	06/10/2025 11:21	06/11/2025 16:32	J
WET CHEMISTRY (EPA 300.0)								
Chloride	44	mg/L	40	10	5	06/17/2025 18:44	06/17/2025 18:44	J
Fluoride	1.0 U	mg/L	4.0	1.0	5	06/17/2025 18:44	06/17/2025 18:44	J
Sulfate	630	mg/L	40	10	5	06/17/2025 18:44	06/17/2025 18:44	J
WET CHEMISTRY (SM 2540 C-2015)								
Total Dissolved Solids	1200	mg/L	10	10	1	06/09/2025 17:27	06/09/2025 17:27	J





FINAL - REVISION

Workorder: CCR Compliance Sampling (J2508590)

Analytical Results

Parameter	Results	Units	PQL	MDL	DF	Prepared	Analyzed	Lab
Lab ID: J2508590003 Date Collected: 06/03/2025 11:20 Matrix: Water								
Sample ID: 25-310 MW-20 Date Received: 06/05/2025 14:51								
METALS (EPA 200.7)								
Boron	2.3	mg/L	0.40	0.10	1	06/10/2025 11:21	06/10/2025 19:47	J
Calcium	380	mg/L	4.0	1.0	5	06/10/2025 11:21	06/11/2025 16:45	J
WET CHEMISTRY (EPA 300.0)								
Chloride	120	mg/L	40	10	5	06/17/2025 19:45	06/17/2025 19:45	J
Fluoride	1.0 U	mg/L	4.0	1.0	5	06/17/2025 19:45	06/17/2025 19:45	J
Sulfate	770	mg/L	40	10	5	06/17/2025 19:45	06/17/2025 19:45	J
WET CHEMISTRY (SM 2540 C-2015)								
Total Dissolved Solids	1500	mg/L	10	10	1	06/09/2025 17:27	06/09/2025 17:27	J





FINAL - REVISION

Workorder: CCR Compliance Sampling (J2508590)

Analytical Results

Parameter	Results	Units	PQL	MDL	DF	Prepared	Analyzed	Lab
Lab ID: J2508590004 Date Collected: 06/03/2025 13:20 Matrix: Water								
Sample ID: 25-311 MW-21 Date Received: 06/05/2025 14:51								
METALS (EPA 200.7)								
Boron	3.8	mg/L	0.40	0.10	1	06/10/2025 11:21	06/10/2025 19:52	J
Calcium	450	mg/L	4.0	1.0	5	06/10/2025 11:21	06/11/2025 16:49	J
WET CHEMISTRY (EPA 300.0)								
Chloride	20 U	mg/L	80	20	10	06/17/2025 20:05	06/17/2025 20:05	J
Fluoride	2.0 U	mg/L	8.0	2.0	10	06/17/2025 20:05	06/17/2025 20:05	J
Sulfate	1100	mg/L	80	20	10	06/17/2025 20:05	06/17/2025 20:05	J
WET CHEMISTRY (SM 2540 C-2015)								
Total Dissolved Solids	1600	mg/L	10	10	1	06/09/2025 17:27	06/09/2025 17:27	J





FINAL - REVISION

Workorder: CCR Compliance Sampling (J2508590)

Analytical Results

Parameter	Results	Units	PQL	MDL	DF	Prepared	Analyzed	Lab
Lab ID: J2508590005 Date Collected: 06/03/2025 14:10 Matrix: Water								
Sample ID: 25-312 MW-22 Date Received: 06/05/2025 14:51								
METALS (EPA 200.7)								
Boron	1.7	mg/L	0.40	0.10	1	06/10/2025 11:21	06/10/2025 19:56	J
Calcium	270	mg/L	1.6	0.40	2	06/10/2025 11:21	06/11/2025 16:54	J
WET CHEMISTRY (EPA 300.0)								
Chloride	23 I	mg/L	80	20	10	06/17/2025 20:26	06/17/2025 20:26	J
Fluoride	2.0 U	mg/L	8.0	2.0	10	06/17/2025 20:26	06/17/2025 20:26	J
Sulfate	1100	mg/L	80	20	10	06/17/2025 20:26	06/17/2025 20:26	J
WET CHEMISTRY (SM 2540 C-2015)								
Total Dissolved Solids	930	mg/L	10	10	1	06/09/2025 17:27	06/09/2025 17:27	J





FINAL - REVISION

Workorder: CCR Compliance Sampling (J2508590)

Analytical Results

Parameter	Results	Units	PQL	MDL	DF	Prepared	Analyzed	Lab
Lab ID: J2508590006 Date Collected: 06/04/2025 09:42 Matrix: Water								
Sample ID: 25-314 MW-3A Date Received: 06/05/2025 14:51								
METALS (EPA 200.7)								
Boron	0.10 U	mg/L	0.40	0.10	1	06/10/2025 11:21	06/10/2025 20:01	J
Calcium	1.2	mg/L	0.80	0.20	1	06/10/2025 11:21	06/10/2025 20:01	J
WET CHEMISTRY (EPA 300.0)								
Chloride	9.2	mg/L	8.0	2.0	1	06/06/2025 19:36	06/06/2025 19:36	J
Fluoride	0.20 U	mg/L	0.80	0.20	1	06/06/2025 19:36	06/06/2025 19:36	J
Sulfate	4.5 I	mg/L	8.0	2.0	1	06/06/2025 19:36	06/06/2025 19:36	J
WET CHEMISTRY (SM 2540 C-2015)								
Total Dissolved Solids	72	mg/L	10	10	1	06/09/2025 17:27	06/09/2025 17:27	J





FINAL - REVISION

Workorder: CCR Compliance Sampling (J2508590)

Analytical Results

Lab ID: J2508590007 **Date Collected:** 06/04/2025 10:14 **Matrix:** Water
Sample ID: 25-315 MW-5A **Date Received:** 06/05/2025 14:51

Parameter	Results	Units	PQL	MDL	DF	Prepared	Analyzed	Lab
METALS (EPA 200.7)								
Boron	0.10 U	mg/L	0.40	0.10	1	06/10/2025 11:21	06/10/2025 20:05	J
Calcium	6.5	mg/L	0.80	0.20	1	06/10/2025 11:21	06/10/2025 20:05	J
WET CHEMISTRY (EPA 300.0)								
Chloride	22	mg/L	8.0	2.0	1	06/06/2025 19:56	06/06/2025 19:56	J
Fluoride	0.20 U	mg/L	0.80	0.20	1	06/06/2025 19:56	06/06/2025 19:56	J
Sulfate	7.5 I	mg/L	8.0	2.0	1	06/06/2025 19:56	06/06/2025 19:56	J
WET CHEMISTRY (SM 2540 C-2015)								
Total Dissolved Solids	86	mg/L	10	10	1	06/09/2025 17:27	06/09/2025 17:27	J





FINAL - REVISION

Workorder: CCR Compliance Sampling (J2508590)

Analytical Results

Parameter	Results	Units	PQL	MDL	DF	Prepared	Analyzed	Lab
Lab ID: J2508590008 Date Collected: 06/04/2025 10:53 Matrix: Water								
Sample ID: 25-316 MW-41AR Date Received: 06/05/2025 14:51								
METALS (EPA 200.7)								
Boron	0.12 I	mg/L	0.40	0.10	1	06/10/2025 11:21	06/10/2025 20:27	J
Calcium	15	mg/L	0.80	0.20	1	06/10/2025 11:21	06/10/2025 20:27	J
WET CHEMISTRY (EPA 300.0)								
Chloride	25	mg/L	8.0	2.0	1	06/06/2025 20:17	06/06/2025 20:17	J
Fluoride	0.20 U	mg/L	0.80	0.20	1	06/06/2025 20:17	06/06/2025 20:17	J
Sulfate	43	mg/L	8.0	2.0	1	06/06/2025 20:17	06/06/2025 20:17	J
WET CHEMISTRY (SM 2540 C-2015)								
Total Dissolved Solids	140	mg/L	10	10	1	06/09/2025 17:27	06/09/2025 17:27	J





FINAL - REVISION

Workorder: CCR Compliance Sampling (J2508590)

QC Results

QC Batch: ICPj/4467 **Analysis Method:** EPA 200.7
Preparation Method: EPA 200.7
Associated Lab IDs: J2508590001, J2508590002, J2508590003, J2508590004, J2508590005, J2508590006, J2508590007, J2508590008

Method Blank(5875393)

Parameter	Results	Units	PQL	MDL	Lab
Boron	0.10 U	mg/L	0.40	0.10	J
Calcium	0.20 U	mg/L	0.80	0.20	J

Lab Control Sample (5875394)

Parameter	Units	Spiked Amount	Spike Result	Spike Recovery	Control Limits	Lab
Boron	mg/L	2	2	99	85 - 115	J
Calcium	mg/L	4	4	101	85 - 115	J

Matrix Spike (5875395); Matrix Spike Duplicate (5875396); Original (J2508590001); Parent Lab Sample (J2508590001)

Parameter	Units	Spiked Amount	Spike Result	Spike Recovery	Control Limits	Dup Result	Dup Recovery	RPD	RPD Limit	Lab
Boron	mg/L	2	2.5	103	70 - 130	2.5	103	0	20	J
Calcium	mg/L	4	230	62	70 - 130	240	241	3	20	J

Matrix Spike (5875397); Matrix Spike Duplicate (5875398); Original (J2508590007); Parent Lab Sample (J2508590007)

Parameter	Units	Spiked Amount	Spike Result	Spike Recovery	Control Limits	Dup Result	Dup Recovery	RPD	RPD Limit	Lab
Boron	mg/L	2	2.1	103	70 - 130	2	101	3	20	J
Calcium	mg/L	4	11	104	70 - 130	10	94	4	20	J

Matrix Spike (5875395); Matrix Spike Duplicate (5875396); Original (J2508590001); Parent Lab Sample (J2508590001)

Parameter	Units	Spiked Amount	Spike Result	Spike Recovery	Control Limits	Dup Result	Dup Recovery	RPD	RPD Limit	Lab
Boron	mg/L	2	2.5	103	70 - 130	2.5	103	0	20	J
Calcium	mg/L	4	230	62	70 - 130	240	241	3	20	J





FINAL - REVISION

Workorder: CCR Compliance Sampling (J2508590)

QC Results

QC Batch: WCAj/19293 **Analysis Method:** EPA 300.0
Preparation Method: EPA 300.0
Associated Lab IDs: J2508590001, J2508590002, J2508590003, J2508590004, J2508590005, J2508590006, J2508590007, J2508590008

Method Blank(5872916)

Parameter	Results	Units	PQL	MDL	Lab
Fluoride	0.20 U	mg/L	0.80	0.20	J
Chloride	2.0 U	mg/L	8.0	2.0	J
Sulfate	2.0 U	mg/L	8.0	2.0	J

Lab Control Sample (5872917)

Parameter	Units	Spiked Amount	Spike Result	Spike Recovery	Control Limits	Lab
Fluoride	mg/L	2	2	102	90 - 110	J
Chloride	mg/L	20	20	100	90 - 110	J
Sulfate	mg/L	20	21	103	90 - 110	J

Matrix Spike (5872918); Matrix Spike Duplicate (5872919); Original (J2508637001); Parent Lab Sample (J2508637001)

Parameter	Units	Spiked Amount	Spike Result	Spike Recovery	Control Limits	Dup Result	Dup Recovery	RPD	RPD Limit	Lab
Fluoride	mg/L	2	2.4	101	90 - 110	2.4	102	1	10	J
Chloride	mg/L	20	25	108	90 - 110	26	110	2	10	J
Sulfate	mg/L	20	34	109	90 - 110	35	113	2	10	J

QC Result Comments

Matrix Spike Duplicate - 5872919 - Sulfate

J4|Estimated Result





FINAL - REVISION

Workorder: CCR Compliance Sampling (J2508590)

QC Results

QC Batch: WCAj/19310 **Analysis Method:** SM 2540 C-2015
Preparation Method: SM 2540 C-2015
Associated Lab IDs: J2508590001, J2508590002, J2508590003, J2508590004, J2508590005, J2508590006, J2508590007, J2508590008

Method Blank(5874920)

Parameter	Results	Units	PQL	MDL	Lab
Total Dissolved Solids	10 U	mg/L	10	10	J

Lab Control Sample (5874921)

Parameter	Units	Spiked Amount	Spike Result	Spike Recovery	Control Limits	Lab
Total Dissolved Solids	mg/L	300	320	106	85 - 115	J

Sample Duplicate (5874922); Original (J2508590001); Parent Lab Sample (J2508590001, J2508590002, J2508590003, J2508590004, J2508590005, J2508590006, J2508590007, J2508590008)

Parameter	Original	Duplicate	Units	RPD	RPD Limit	Lab
Total Dissolved Solids	844	844	mg/L	0	10	J





FINAL - REVISION

Workorder: CCR Compliance Sampling (J2508590)

QC Cross Reference

Lab ID	Sample ID	Prep Batch	Prep Method
ICPj/4467 - EPA 200.7			
J2508590001	25-308 MW-18	DGMj/10798	EPA 200.7
J2508590002	25-309 MW-19	DGMj/10798	EPA 200.7
J2508590003	25-310 MW-20	DGMj/10798	EPA 200.7
J2508590004	25-311 MW-21	DGMj/10798	EPA 200.7
J2508590005	25-312 MW-22	DGMj/10798	EPA 200.7
J2508590006	25-314 MW-3A	DGMj/10798	EPA 200.7
J2508590007	25-315 MW-5A	DGMj/10798	EPA 200.7
J2508590008	25-316 MW-41AR	DGMj/10798	EPA 200.7
WCAj/19293 - EPA 300.0			
J2508590006	25-314 MW-3A		
J2508590007	25-315 MW-5A		
J2508590008	25-316 MW-41AR		
WCAj/19310 - SM 2540 C-2015			
J2508590001	25-308 MW-18		
J2508590002	25-309 MW-19		
J2508590003	25-310 MW-20		
J2508590004	25-311 MW-21		
J2508590005	25-312 MW-22		
J2508590006	25-314 MW-3A		
J2508590007	25-315 MW-5A		
J2508590008	25-316 MW-41AR		
WCAj/19445 - EPA 300.0			
J2508590001	25-308 MW-18		
J2508590002	25-309 MW-19		
J2508590003	25-310 MW-20		
J2508590004	25-311 MW-21		
J2508590005	25-312 MW-22		



Seminole Electric Cooperative, Inc.

890 Highway 17 North, Palatka, Florida 32177

Sample Number: 25 - 308

Type of Sample: GRAB

Field I.D.: MW-18

Date & Time Sampled: 6-3-25 0934

Sampled by: P. Boles

Project I.D.: CCR Compliance Sampling

Sampling Equipment: Peristaltic Pump

Sample Description: Groundwater

Weather Conditions:

LAB	ANALYSIS	RESULTS	UNITS
AEL	Boron		µg/L
AEL	Calcium		µg/L
AEL	Chloride		mg/L
AEL	Fluoride		mg/L
AEL	Sulfate		mg/L
AEL	TDS		mg/L

SECI Data & Q.C. Reviewed by:

Date Reviewed:

Outside Lab Data & Q.C. Reviewed

Date Reviewed:



* J 2 5 0 8 5 9 0 *

pH (S.U.)

Initials: Time:

Cond. (umho)

Date:

Temp. (Degrees C)

Initials: Time:

TRO/FAO (mg/L)

Date:

Turbidity (NTU)

Initials: Time:

Depth (feet)

Date:

Initials: Time:

Date:

Initials: Time:

All Field Q.C. Pass/Fail Initial: PB Date & Time: 6-3-25 0727

Sample Preparation Method: Total Metals

Common Carrier: AEL

Relinquished by: Date & Time

Contract Lab: AEL

Received by: Date & Time

Relinquished by: Date & Time

Contract Lab:

Received by: Date & Time 6/5/25 14:51

Total Number of Sample Containers: 2

Comments / Additional Requests:

(1) 250 mL metals preserved w/ HNO3 to pH <2 ✓

(1) 500 mL anions unpreserved

Profile #36214 (Line 9)

INCLUDE CSV FILE STANDARD AEL FORMAT

Seminole Electric Cooperative, Inc.

890 Highway 17 North, Palatka, Florida 32177

Sample Number: 25 - 509

Type of Sample: GRAB

Field I.D.: MW-19

Date & Time Sampled: 6-3-25 1029

Sampled by: P. Boles

Project I.D.: CCR Compliance Sampling

Sampling Equipment: Peristaltic Pump

Sample Description: Groundwater

Weather Conditions:

LAB	ANALYSIS	RESULTS	UNITS
AEL	Boron		µg/L
AEL	Calcium		µg/L
AEL	Chloride		mg/L
AEL	Fluoride		mg/L
AEL	Sulfate		mg/L
AEL	TDS		mg/L

SECI Data & Q.C. Reviewed by:
 Date Reviewed:
 Outside Lab Data & Q.C. Review
 Date Reviewed:



* J 2 5 0 8 5 9 0 *

pH (S.U.)	Date:	Initials:	Time:
Cond. (umho)	Date:	Initials:	Time:
Temp. (Degrees C)	Date:	Initials:	Time:
TRO/FAO (mg/L)	Date:	Initials:	Time:
Turbidity (NTU)	Date:	Initials:	Time:
Depth (feet)	Date:	Initials:	Time:

All Field Q.C. (Pass/Fail Initial: PB Date & Time: 6-3-25 0727)

Sample Preparation Method: Total Metals

Common Carrier: AEL

Relinquished by: Date & Time

Contract Lab: AEL

Received by: Date & Time

Relinquished by: Date & Time

Contract Lab:

Received by: JYL Date & Time 6/5/25 14:51

Total Number of Sample Containers: 2

Comments / Additional Requests:

(1) 250 mL metals preserved w/ HNO3 to pH <2 ✓

(1) 500 mL anions unpreserved

Profile #36214 (Line 9)

INCLUDE CSV FILE STANDARD AEL FORMAT

Seminole Electric Cooperative, Inc.

890 Highway 17 North, Palatka, Florida 32177

Sample Number: 25 - 310

Type of Sample: GRAB

Field I.D.: MW-20

Date & Time Sampled: 6-3-25 11:20

Sampled by: P. Boles

Project I.D.: CCR Compliance Sampling

Sampling Equipment: Peristaltic Pump

Sample Description: Groundwater

Weather Conditions:

J 2508590

LAB	ANALYSIS	RESULTS	UNITS	SECI Data & Q.C. Reviewed by:	
AEL	Boron		µg/L	Date Reviewed:	
AEL	Calcium		µg/L	Outside Lab Data & Q.C. Reviewed by:	
AEL	Chloride		mg/L	Date Reviewed:	
AEL	Fluoride		mg/L	pH	Date:
AEL	Sulfate		mg/L	(S.U.)	Initials: Time:
AEL	TDS		mg/L	Cond.	Date:
				(umho)	Initials: Time:
				Temp.	Date:
				(Degrees C)	Initials: Time:
				TRO/FAO	Date:
				(mg/L)	Initials: Time:
				Turbidity	Date:
				(NTU)	Initials: Time:
				Depth	Date:
				(feet)	Initials: Time:
				All Field Q.C. (Pass/Fail Initial: PB Date & Time: 6-3-25 0727	
				Sample Preparation Method: Total Metals	
				Common Carrier: AEL	
				Relinquished by: Date & Time	
				Contract Lab: AEL	
				Received by: Date & Time	
				Relinquished by: Date & Time	
				Contract Lab:	
				Received by: <i>MB</i> Date & Time 6/5/25 14:51	
				Total Number of Sample Containers: 2	
				Comments / Additional Requests:	
				(1) 250 mL metals preserved w/ HNO3 to pH <2 ✓	
				(1) 500 mL anions unpreserved	
				Profile #36214 (Line 9)	
				INCLUDE CSV FILE STANDARD AEL FORMAT	

Seminole Electric Cooperative, Inc.

890 Highway 17 North, Palatka, Florida 32177

Sample Number: 25 - 311

Type of Sample: GRAB

Field I.D.: MW-21

Date & Time Sampled: 6-3-25 1320

Sampled by: P. Boles

Project I.D.: CCR Compliance Sampling

Sampling Equipment: Peristaltic Pump

Sample Description: Groundwater

Weather Conditions:

52508590

LAB	ANALYSIS	RESULTS	UNITS	SECI Data & Q.C. Reviewed by:	
AEL	Boron		µg/L	Date Reviewed:	
AEL	Calcium		µg/L	Outside Lab Data & Q.C. Reviewed by:	
AEL	Chloride		mg/L	Date Reviewed:	
AEL	Fluoride		mg/L	pH	Date:
AEL	Sulfate		mg/L	(S.U.)	Initials: Time:
AEL	TDS		mg/L	Cond.	Date:
				(umho)	Initials: Time:
				Temp.	Date:
				(Degrees C)	Initials: Time:
				TRO/FAO	Date:
				(mg/L)	Initials: Time:
				Turbidity	Date:
				(NTU)	Initials: Time:
				Depth	Date:
				(feet)	Initials: Time:
				All Field Q.C. (Pass/Fail Initial: PB Date & Time: 6-3-25 0727	
				Sample Preparation Method: Total Metals	
				Common Carrier: AEL	
				Relinquished by:	Date & Time
				Contract Lab: AEL	
				Received by:	Date & Time
				Relinquished by:	Date & Time
				Contract Lab:	
				Received by: Jgn	Date & Time 6/5/25 14:51
				Total Number of Sample Containers: 2	
				Comments / Additional Requests:	
				(1) 250 mL metals preserved w/ HNO3 to pH <2 ✓	
				(1) 500 mL anions unpreserved	
				Profile #36214 (Line 9)	
				INCLUDE CSV FILE STANDARD AEL FORMAT	

Seminole Electric Cooperative, Inc.

890 Highway 17 North, Palatka, Florida 32177

Sample Number: 25 - 312

Type of Sample: GRAB

Field I.D.: MW-22

Date & Time Sampled: 6-3-25 1410

Sampled by: P. Boles

Project I.D.: CCR Compliance Sampling

Sampling Equipment: Peristaltic Pump

Sample Description: Groundwater

Weather Conditions:

52508590

LAB	ANALYSIS	RESULTS	UNITS	SECI Data & Q.C. Reviewed by:		
AEL	Boron		µg/L	Date Reviewed:		
AEL	Calcium		µg/L	Outside Lab Data & Q.C. Reviewed by:		
AEL	Chloride		mg/L	Date Reviewed:		
AEL	Fluoride		mg/L	pH (S.U.)	Date:	
AEL	Sulfate		mg/L		Initials:	Time:
AEL	TDS		mg/L	Cond. (umho)	Date:	
					Initials:	Time:
				Temp. (Degrees C)	Date:	
					Initials:	Time:
				TRO/FAO (mg/L)	Date:	
					Initials:	Time:
				Turbidity (NTU)	Date:	
					Initials:	Time:
				Depth (feet)	Date:	
					Initials:	Time:
				All Field Q.C. (Pass/Fail Initial: PB Date & Time: 6-3-25 0727)		
				Sample Preparation Method: Total Metals		
				Common Carrier: AEL		
				Relinquished by: _____ Date & Time		
				Contract Lab: AEL		
				Received by: _____ Date & Time		
				Relinquished by: _____ Date & Time		
				Contract Lab:		
				Received by: JEP Date & Time 6/5/25 14:51		
				Total Number of Sample Containers: 2		
				Comments / Additional Requests:		
				(1) 250 mL metals preserved w/ HNO3 to pH <2 ✓		
				(1) 500 mL anions unpreserved		
				Profile #36214 (Line 9)		
				INCLUDE CSV FILE STANDARD AEL FORMAT		

Seminole Electric Cooperative, Inc.

890 Highway 17 North, Palatka, Florida 32177

Sample Number: 25 - 0314

Type of Sample: GRAB

Field I.D.: MW-3A

Date & Time Sampled: 6-4-25

0901 0942

Sampled by: P. Boles

Project I.D.: CCR Compliance Sampling

Sampling Equipment: Well Wizard / Bladder Pump

Sample Description: Groundwater

Weather Conditions:

5250890

LAB	ANALYSIS	RESULTS	UNITS
AEL	Boron		µg/L
AEL	Calcium		µg/L
AEL	Chloride		mg/L
AEL	Fluoride		mg/L
AEL	Sulfate		mg/L
AEL	TDS		mg/L

SECI Data & Q.C. Reviewed by:

Date Reviewed:

Outside Lab Data & Q.C. Reviewed by:

Date Reviewed:

pH (S.U.)	Date:	
Cond. (umho)	Initials:	Time:
Temp. (Degrees C)	Date:	
TRO/FAO (mg/L)	Initials:	Time:
Turbidity (NTU)	Date:	
Depth (feet)	Initials:	Time:

All Field Q.C. Pass/Fail Initial: PB Date & Time: 6-4-25 0901

Sample Preparation Method: Total Metals

Common Carrier: AEL

Relinquished by: Date & Time

Contract Lab: AEL

Received by: Date & Time

Relinquished by: Date & Time

Contract Lab:

Received by: Date & Time 6/5/25 14:51

Total Number of Sample Containers: 2

Comments / Additional Requests:

(1) 250 mL metals preserved w/ HNO3 to pH <2 ✓

(1) 500 mL anions unpreserved

Profile #36214 (Line 9)

INCLUDE CSV FILE STANDARD AEL FORMAT

Seminole Electric Cooperative, Inc.

890 Highway 17 North, Palatka, Florida 32177

Sample Number: 25 - 0315

Type of Sample: GRAB

Field I.D.: MW-5A

Date & Time Sampled: 6-4-25

1014

Sampled by: P. Boles

Project I.D.: CCR Compliance Sampling

Sampling Equipment: Well Wizard / Bladder Pump

Sample Description: Groundwater

Weather Conditions:

52508590

LAB	ANALYSIS	RESULTS	UNITS
AEL	Boron		µg/L
AEL	Calcium		µg/L
AEL	Chloride		mg/L
AEL	Fluoride		mg/L
AEL	Sulfate		mg/L
AEL	TDS		mg/L

SECI Data & Q.C. Reviewed by:

Date Reviewed:

Outside Lab Data & Q.C. Reviewed by:

Date Reviewed:

pH (S.U.)	Date:	
	Initials:	Time:
Cond. (umho)	Date:	
	Initials:	Time:
Temp. (Degrees C)	Date:	
	Initials:	Time:
TRO/FAO (mg/L)	Date:	
	Initials:	Time:
Turbidity (NTU)	Date:	
	Initials:	Time:
Depth (feet)	Date:	
	Initials:	Time:

All Field Q.C. Pass/Fail Initial: PB Date & Time: 6-4-25 0901

Sample Preparation Method: Total Metals

Common Carrier: AEL

Relinquished by: Date & Time

Contract Lab: AEL

Received by: Date & Time

Relinquished by: Date & Time

Contract Lab:

Received by: JYJ Date & Time 6/5/25 14:51

Total Number of Sample Containers: 2

Comments / Additional Requests:

(1) 250 mL metals preserved w/ HNO3 to pH <2 ✓

(1) 500 mL anions unpreserved

Profile #36214 (Line 9)

INCLUDE CSV FILE STANDARD AEL FORMAT

Seminole Electric Cooperative, Inc.

890 Highway 17 North, Palatka, Florida 32177

Sample Number: 25-0316

Type of Sample: GRAB

Field I.D.: MW-41AR

Date & Time Sampled: 6-4-25 1053

Sampled by: P. Boles

Project I.D.: CCR Compliance Sampling

Sampling Equipment: Well Wizard / Bladder Pump

Sample Description: Groundwater

Weather Conditions:

52508590

LAB	ANALYSIS	RESULTS	UNITS	SECI Data & Q.C. Reviewed by:	
AEL	Boron		µg/L	Date Reviewed:	
AEL	Calcium		µg/L	Outside Lab Data & Q.C. Reviewed by:	
AEL	Chloride		mg/L	Date Reviewed:	
AEL	Fluoride		mg/L	pH	Date:
AEL	Sulfate		mg/L	(S.U.)	Initials: Time:
AEL	TDS		mg/L	Cond.	Date:
				(umho)	Initials: Time:
				Temp.	Date:
				(Degrees C)	Initials: Time:
				TRO/FAO	Date:
				(mg/L)	Initials: Time:
				Turbidity	Date:
				(NTU)	Initials: Time:
				Depth	Date:
				(feet)	Initials: Time:
				All Field Q.C. (Pass/Fail Initial: PD Date & Time: 6-4-25 0901	
				Sample Preparation Method: Total Metals	
				Common Carrier: AEL	
				Relinquished by: Date & Time	
				Contract Lab: AEL	
				Received by: Date & Time	
				Relinquished by: Date & Time	
				Contract Lab:	
				Received by: Date & Time 6/8/25 14:51	
				Total Number of Sample Containers: 2	
				Comments / Additional Requests:	
				(1) 250 mL metals preserved w/ HNO3 to pH <2 ✓	
				(1) 500 mL anions unpreserved	
				Profile #36214 (Line 9)	
				INCLUDE CSV FILE STANDARD AEL FORMAT	



- JAX TPA MIA ALS
- FTM GNV LPD SEM

WO Barcode Sticker Goes Here

Client: Seminole Electric Co. Log-In request number: J2508590
 Received by: Ta Glenn Project name: CCR Compliance Sampling
 Date/Time: 6/5/25 Completed by: [Signature]

Cooler/Shipping Information: Type: Cooler Box Other (describe) _____
 Courier: AEL Client UPS Blue Streak FedEx Other Tracking # 25-0314/15/08/09/10/11/12/16

Cooler temperature: Identify the cooler and document the temperature blank (bottle) or ice water (cooler) measurement

Cooler/Container ID	Temp (°C)	Temp taken from	Temp measured with
	2.8	<input type="checkbox"/> Bottle <input checked="" type="checkbox"/> Cooler	IR gun/Therm (ID): _____
	2.1	<input type="checkbox"/> Bottle <input checked="" type="checkbox"/> Cooler	IR gun/Therm (ID): _____
	1.9	<input type="checkbox"/> Bottle <input checked="" type="checkbox"/> Cooler	IR gun/Therm (ID): _____
		<input type="checkbox"/> Bottle <input type="checkbox"/> Cooler	IR gun/Therm (ID): _____
		<input type="checkbox"/> Bottle <input type="checkbox"/> Cooler	IR gun/Therm (ID): _____

Other information: Any discrepancies should be explained in the "Comments" section below.

CHECKLIST	YES	NO	NA
1. Were custody seals on shipping container(s) intact?	<input checked="" type="checkbox"/>		
2. Were custody papers properly included with samples?	<input checked="" type="checkbox"/>		
3. Were custody papers properly filled out (ink, signed, match labels)?	<input checked="" type="checkbox"/>		
4. Did all bottles arrive in good condition (unbroken)?	<input checked="" type="checkbox"/>		
5. Were all bottle labels complete (sample #, date, signed, analysis, preservatives)?	<input checked="" type="checkbox"/>		
6. Did the sample labels agree with the chain of custody?	<input checked="" type="checkbox"/>		
7. Were correct bottles used for the tests indicated?	<input checked="" type="checkbox"/>		
8. Were proper sample preservation techniques indicated on the label?	<input checked="" type="checkbox"/>		
9. Were samples received within holding times?	<input checked="" type="checkbox"/>		
10. Were all VOA vials free of the presence of air bubbles?	<input checked="" type="checkbox"/>		
11. Have all Soil VOA Vials and Encores been placed in a freezer within 48 hours of collection?			<input checked="" type="checkbox"/>
12. Were samples in direct contact with wet ice? If "No," check one: <input type="checkbox"/> NO ICE <input type="checkbox"/> BLUE ICE	<input checked="" type="checkbox"/>		
13. Was the cooler temperature less than 6°C?	<input checked="" type="checkbox"/>		
14. Where pH preservation required, are sample pHs checked and any anomalies recorded by Sample control? Are all <2 or >10? Note: VOA samples are checked by laboratory analysts.	<input checked="" type="checkbox"/>		
15. Was sufficient sample volume provided to perform all tests?	<input checked="" type="checkbox"/>		
16. If for Bacteriological testing, were containers supplied by AEL? (See QA officer if answer is no)			<input checked="" type="checkbox"/>
17. Were all sample containers provided by AEL? (Other than Bacteriological)			<input checked="" type="checkbox"/>
18. Were samples accepted into the laboratory?	<input checked="" type="checkbox"/>	<input checked="" type="checkbox"/>	
19. When necessary to split samples into other bottles, is it noted in the comments?	<input checked="" type="checkbox"/>		
20. Where Encores received and if so, how many?			<input checked="" type="checkbox"/>

Comments: (Note all sample(s) and container (s) with a "No" checklist response in this comment section)

All bottles used were provided by Seminole Electric.



Advanced Environmental Laboratories, Inc
6681 Southpoint Pkwy Jacksonville, FL 32216
Payments: P.O. Box 551580 Jacksonville, FL 32255-1580
Phone: (904) 363-9350
Fax: (904) 363-9354

FINAL

Workorder: CCR Compliance Sampling (J2517064)

November 17, 2025

Micheal Rogero
Seminole Electric Cooperative, Inc.
890 Highway 17 North
Palatka, FL 32177

RE: Workorder: J2517064 CCR Compliance Sampling

Dear Micheal Rogero:

Enclosed are the analytical results for sample(s) received by the laboratory on Thursday October 30, 2025. Results reported herein conform to the most current NELAC standards, where applicable, unless otherwise narrated in the body of the report. The analytical results for the samples contained in this report were submitted for analysis as outlined by the Chain of Custody and results pertain only to these samples.

If you have any questions concerning this report, please feel free to contact me.

Sincerely,

Jerry Allen, Client Services Manager
JAllen@aellab.com

Certificate of Analysis

This report shall not be reproduced, except in full,
without the written consent of Advanced Environmental Laboratories, Inc.





FINAL

Workorder: CCR Compliance Sampling (J2517064)

Sample Summary

Lab ID	Sample ID	Matrix	Method	Date Collected	Date Received	Analytes Reported	Basis
J2517064001	25-0621 MW-18	WA	EPA 200.7	10/30/2025 11:15	10/30/2025 14:20	2	NA
J2517064001	25-0621 MW-18	WA	EPA 300.0	10/30/2025 11:15	10/30/2025 14:20	3	NA
J2517064001	25-0621 MW-18	WA	SM 2540 C-2015	10/30/2025 11:15	10/30/2025 14:20	1	NA
J2517064002	25-0622 MW-19	WA	EPA 200.7	10/30/2025 13:31	10/30/2025 14:20	2	NA
J2517064002	25-0622 MW-19	WA	EPA 300.0	10/30/2025 13:31	10/30/2025 14:20	3	NA
J2517064002	25-0622 MW-19	WA	SM 2540 C-2015	10/30/2025 13:31	10/30/2025 14:20	1	NA
J2517064003	25-0623 MW-20	WA	EPA 200.7	10/30/2025 14:21	10/30/2025 14:20	2	NA
J2517064003	25-0623 MW-20	WA	EPA 300.0	10/30/2025 14:21	10/30/2025 14:20	3	NA
J2517064003	25-0623 MW-20	WA	SM 2540 C-2015	10/30/2025 14:21	10/30/2025 14:20	1	NA
J2517064004	25-0624 MW-21	WA	EPA 200.7	10/30/2025 15:11	10/30/2025 14:20	2	NA
J2517064004	25-0624 MW-21	WA	EPA 300.0	10/30/2025 15:11	10/30/2025 14:20	3	NA
J2517064004	25-0624 MW-21	WA	SM 2540 C-2015	10/30/2025 15:11	10/30/2025 14:20	1	NA
J2517064005	25-0632 MW-22	WA	EPA 200.7	10/30/2025 10:21	10/30/2025 14:20	2	NA
J2517064005	25-0632 MW-22	WA	EPA 300.0	10/30/2025 10:21	10/30/2025 14:20	3	NA
J2517064005	25-0632 MW-22	WA	SM 2540 C-2015	10/30/2025 10:21	10/30/2025 14:20	1	NA
J2517064006	25-0633 MW-41AR	WA	EPA 200.7	10/30/2025 14:04	10/30/2025 14:20	2	NA
J2517064006	25-0633 MW-41AR	WA	EPA 300.0	10/30/2025 14:04	10/30/2025 14:20	3	NA
J2517064006	25-0633 MW-41AR	WA	SM 2540 C-2015	10/30/2025 14:04	10/30/2025 14:20	1	NA
J2517064007	25-0634 MW-3A	WA	EPA 200.7	10/30/2025 14:33	10/30/2025 14:20	2	NA
J2517064007	25-0634 MW-3A	WA	EPA 300.0	10/30/2025 14:33	10/30/2025 14:20	3	NA
J2517064007	25-0634 MW-3A	WA	SM 2540 C-2015	10/30/2025 14:33	10/30/2025 14:20	1	NA
J2517064008	25-0635 MW-5A	WA	EPA 200.7	10/30/2025 11:07	10/30/2025 14:20	2	NA
J2517064008	25-0635 MW-5A	WA	EPA 300.0	10/30/2025 11:07	10/30/2025 14:20	3	NA
J2517064008	25-0635 MW-5A	WA	SM 2540 C-2015	10/30/2025 11:07	10/30/2025 14:20	1	NA

Certificate of Analysis

This report shall not be reproduced, except in full,
 without the written consent of Advanced Environmental Laboratories, Inc.





FINAL

Workorder: CCR Compliance Sampling (J2517064)

Workorder Summary

Task Comments

J2517064005 (25-0632 MW-22) - WCAj/21218 - IC,E300.0,Water

J2517064005 was analyzed at dilution due to high conductivity. The lowest possible dilution was performed to prevent damage to the instrument.

Analysis Results Comments

J2517064001 (25-0621 MW-18) - Calcium

The matrix spike (MS) and/or matrix spike duplicate (MSD) recoveries of Calcium for J2517064001 were outside control criteria. Recoveries in the Laboratory Control Sample (LCS) were acceptable, which indicates the analytical batch was in control. The data was flagged accordingly.

J2517064003 (25-0623 MW-20) - Fluoride

J2517064003 was analyzed at dilution due to high conductivity. The lowest possible dilution was performed to prevent damage to the instrument.

J2517064004 (25-0624 MW-21) - Fluoride

The matrix spike (MS) and/or matrix spike duplicate (MSD) recoveries of Chloride, Fluoride, and Sulfate for J2517064004 were outside control criteria. Recoveries in the Laboratory Control Sample (LCS) were acceptable, which indicates the analytical batch was in control. The data was flagged accordingly.

Certificate of Analysis

This report shall not be reproduced, except in full,
without the written consent of Advanced Environmental Laboratories, Inc.





FINAL

Workorder: CCR Compliance Sampling (J2517064)

Analytical Results Qualifiers

Parameter Qualifiers

- U The compound was analyzed for but not detected.
- I The reported value is between the laboratory method detection limit and the laboratory practical quantitation limit.
- J4 Estimated Result

Lab Qualifiers

- J DOH Certification #E82574 (FL NELAC) AEL-Jacksonville
DOD-ELAP Certification #L23-514 (ISO/IEC 17025:2017) AEL-Jacksonville

Certificate of Analysis

This report shall not be reproduced, except in full,
without the written consent of Advanced Environmental Laboratories, Inc.





FINAL

Workorder: CCR Compliance Sampling (J2517064)

Analytical Results

Parameter	Results	Units	PQL	MDL	DF	Prepared	Analyzed	Lab
Lab ID: J2517064001 Date Collected: 10/30/2025 11:15 Matrix: Water								
Sample ID: 25-0621 MW-18 Date Received: 10/30/2025 14:20								
METALS (EPA 200.7)								
Boron	0.86	mg/L	0.40	0.10	1	11/07/2025 10:10	11/07/2025 22:49	J
Calcium	230	mg/L	1.6	0.40	2	11/07/2025 10:10	11/12/2025 16:11	J
WET CHEMISTRY (EPA 300.0)								
Chloride	26	mg/L	8.0	2.0	1	10/31/2025 13:46	10/31/2025 13:46	J
Fluoride	0.20 U	mg/L	0.80	0.20	1	10/31/2025 13:46	10/31/2025 13:46	J
Sulfate	520	mg/L	8.0	2.0	1	10/31/2025 13:46	10/31/2025 13:46	J
WET CHEMISTRY (SM 2540 C-2015)								
Total Dissolved Solids	820	mg/L	10	10	1	11/03/2025 17:35	11/03/2025 17:35	J

Analysis Results Comments

Calcium

J4|Estimated Result





FINAL

Workorder: CCR Compliance Sampling (J2517064)

Analytical Results

Parameter	Results	Units	PQL	MDL	DF	Prepared	Analyzed	Lab
Lab ID: J2517064002 Date Collected: 10/30/2025 13:31 Matrix: Water								
Sample ID: 25-0622 MW-19 Date Received: 10/30/2025 14:20								
METALS (EPA 200.7)								
Boron	1.2	mg/L	0.40	0.10	1	11/07/2025 10:10	11/07/2025 23:03	J
Calcium	150	mg/L	0.80	0.20	1	11/07/2025 10:10	11/07/2025 23:03	J
WET CHEMISTRY (EPA 300.0)								
Chloride	27	mg/L	8.0	2.0	1	10/31/2025 14:04	10/31/2025 14:04	J
Fluoride	0.20 U	mg/L	0.80	0.20	1	10/31/2025 14:04	10/31/2025 14:04	J
Sulfate	310	mg/L	8.0	2.0	1	10/31/2025 14:04	10/31/2025 14:04	J
WET CHEMISTRY (SM 2540 C-2015)								
Total Dissolved Solids	560	mg/L	10	10	1	11/03/2025 17:35	11/03/2025 17:35	J





FINAL

Workorder: CCR Compliance Sampling (J2517064)

Analytical Results

Lab ID: J2517064003 **Date Collected:** 10/30/2025 14:21 **Matrix:** Water
Sample ID: 25-0623 MW-20 **Date Received:** 10/30/2025 14:20

Parameter	Results	Units	PQL	MDL	DF	Prepared	Analyzed	Lab
METALS (EPA 200.7)								
Boron	0.23 I	mg/L	0.40	0.10	1	11/07/2025 10:10	11/07/2025 23:07	J
Calcium	120	mg/L	0.80	0.20	1	11/07/2025 10:10	11/07/2025 23:07	J
WET CHEMISTRY (EPA 300.0)								
Chloride	90	mg/L	40	10	5	10/31/2025 14:23	10/31/2025 14:23	J
Fluoride	1.0 U	mg/L	4.0	1.0	5	10/31/2025 14:23	10/31/2025 14:23	J
Sulfate	910	mg/L	40	10	5	10/31/2025 14:23	10/31/2025 14:23	J
WET CHEMISTRY (SM 2540 C-2015)								
Total Dissolved Solids	1400	mg/L	10	10	1	11/03/2025 17:35	11/03/2025 17:35	J





FINAL

Workorder: CCR Compliance Sampling (J2517064)

Analytical Results

Parameter	Results	Units	PQL	MDL	DF	Prepared	Analyzed	Lab
Lab ID: J2517064004 Date Collected: 10/30/2025 15:11 Matrix: Water								
Sample ID: 25-0624 MW-21 Date Received: 10/30/2025 14:20								
METALS (EPA 200.7)								
Boron	5.2	mg/L	0.40	0.10	1	11/07/2025 10:10	11/07/2025 23:11	J
Calcium	350	mg/L	4.0	1.0	5	11/07/2025 10:10	11/13/2025 14:03	J
WET CHEMISTRY (EPA 300.0)								
Chloride	10 U	mg/L	40	10	5	10/31/2025 14:41	10/31/2025 14:41	J
Fluoride	1.0 U	mg/L	4.0	1.0	5	10/31/2025 14:41	10/31/2025 14:41	J
Sulfate	1100	mg/L	40	10	5	10/31/2025 14:41	10/31/2025 14:41	J
WET CHEMISTRY (SM 2540 C-2015)								
Total Dissolved Solids	1700	mg/L	10	10	1	11/03/2025 17:35	11/03/2025 17:35	J





FINAL

Workorder: CCR Compliance Sampling (J2517064)

Analytical Results

Lab ID: J2517064005 **Date Collected:** 10/30/2025 10:21 **Matrix:** Water
Sample ID: 25-0632 MW-22 **Date Received:** 10/30/2025 14:20

Parameter	Results	Units	PQL	MDL	DF	Prepared	Analyzed	Lab
METALS (EPA 200.7)								
Boron	1.8	mg/L	0.40	0.10	1	11/07/2025 10:10	11/07/2025 23:16	J
Calcium	300	mg/L	1.6	0.40	2	11/07/2025 10:10	11/13/2025 14:07	J
WET CHEMISTRY (EPA 300.0)								
Chloride	151	mg/L	16	4.0	2	10/31/2025 15:37	10/31/2025 15:37	J
Fluoride	0.40 U	mg/L	1.6	0.40	2	10/31/2025 15:37	10/31/2025 15:37	J
Sulfate	680	mg/L	16	4.0	2	10/31/2025 15:37	10/31/2025 15:37	J
WET CHEMISTRY (SM 2540 C-2015)								
Total Dissolved Solids	1200	mg/L	10	10	1	11/03/2025 17:35	11/03/2025 17:35	J





FINAL

Workorder: CCR Compliance Sampling (J2517064)

Analytical Results

Parameter	Results	Units	PQL	MDL	DF	Prepared	Analyzed	Lab
Lab ID: J2517064006 Date Collected: 10/30/2025 14:04 Matrix: Water								
Sample ID: 25-0633 MW-41AR Date Received: 10/30/2025 14:20								
METALS (EPA 200.7)								
Boron	0.10 U	mg/L	0.40	0.10	1	11/07/2025 10:10	11/07/2025 23:21	J
Calcium	1.2	mg/L	0.80	0.20	1	11/07/2025 10:10	11/07/2025 23:21	J
WET CHEMISTRY (EPA 300.0)								
Chloride	11	mg/L	8.0	2.0	1	10/31/2025 16:51	10/31/2025 16:51	J
Fluoride	0.20 U	mg/L	0.80	0.20	1	10/31/2025 16:51	10/31/2025 16:51	J
Sulfate	4.0 I	mg/L	8.0	2.0	1	10/31/2025 16:51	10/31/2025 16:51	J
WET CHEMISTRY (SM 2540 C-2015)								
Total Dissolved Solids	63	mg/L	10	10	1	11/03/2025 17:35	11/03/2025 17:35	J





FINAL

Workorder: CCR Compliance Sampling (J2517064)

Analytical Results

Parameter	Results	Units	PQL	MDL	DF	Prepared	Analyzed	Lab
Lab ID: J2517064007 Date Collected: 10/30/2025 14:33 Matrix: Water								
Sample ID: 25-0634 MW-3A Date Received: 10/30/2025 14:20								
METALS (EPA 200.7)								
Boron	0.10 U	mg/L	0.40	0.10	1	11/11/2025 04:27	11/12/2025 16:50	J
Calcium	5.3	mg/L	0.80	0.20	1	11/11/2025 04:27	11/13/2025 14:16	J
WET CHEMISTRY (EPA 300.0)								
Chloride	19	mg/L	8.0	2.0	1	10/31/2025 17:10	10/31/2025 17:10	J
Fluoride	0.20 U	mg/L	0.80	0.20	1	10/31/2025 17:10	10/31/2025 17:10	J
Sulfate	6.7 I	mg/L	8.0	2.0	1	10/31/2025 17:10	10/31/2025 17:10	J
WET CHEMISTRY (SM 2540 C-2015)								
Total Dissolved Solids	85	mg/L	10	10	1	11/03/2025 17:35	11/03/2025 17:35	J





FINAL

Workorder: CCR Compliance Sampling (J2517064)

Analytical Results

Lab ID: J2517064008 **Date Collected:** 10/30/2025 11:07 **Matrix:** Water
Sample ID: 25-0635 MW-5A **Date Received:** 10/30/2025 14:20

Parameter	Results	Units	PQL	MDL	DF	Prepared	Analyzed	Lab
METALS (EPA 200.7)								
Boron	2.2	mg/L	0.40	0.10	1	11/11/2025 04:27	11/12/2025 17:02	J
Calcium	400	mg/L	4.0	1.0	5	11/11/2025 04:27	11/14/2025 13:47	J
WET CHEMISTRY (EPA 300.0)								
Chloride	16	mg/L	8.0	2.0	1	10/31/2025 17:28	10/31/2025 17:28	J
Fluoride	0.20 U	mg/L	0.80	0.20	1	10/31/2025 17:28	10/31/2025 17:28	J
Sulfate	340	mg/L	8.0	2.0	1	10/31/2025 17:28	10/31/2025 17:28	J
WET CHEMISTRY (SM 2540 C-2015)								
Total Dissolved Solids	520	mg/L	10	10	1	11/03/2025 17:35	11/03/2025 17:35	J





FINAL

Workorder: CCR Compliance Sampling (J2517064)

QC Results

QC Batch: ICPj/4804 **Analysis Method:** EPA 200.7
Preparation Method: EPA 200.7
Associated Lab IDs: J2517064001, J2517064002, J2517064003, J2517064004, J2517064005, J2517064006

Method Blank(6104068)

Parameter	Results	Units	PQL	MDL	Lab
Boron	0.10 U	mg/L	0.40	0.10	J
Boron	0.10 U	mg/L	0.40	0.10	J
Calcium	0.20 U	mg/L	0.80	0.20	J
Calcium	0.20 U	mg/L	0.80	0.20	J

Lab Control Sample (6104069)

Parameter	Units	Spiked Amount	Spike Result	Spike Recovery	Control Limits	Lab
Boron	mg/L	2	2	98	85 - 115	J
Calcium	mg/L	4	3.8	96	85 - 115	J

Matrix Spike (6104070); Matrix Spike Duplicate (6104071); Original (J2516825001); Parent Lab Sample (J2516825001)

Parameter	Units	Spiked Amount	Spike Result	Spike Recovery	Control Limits	Dup Result	Dup Recovery	RPD	RPD Limit	Lab
Boron	mg/L	2	2	98	70 - 130	2	99	1	20	J
Calcium	mg/L	4	45	95	70 - 130	45	114	2	20	J

Matrix Spike (6104072); Matrix Spike Duplicate (6104073); Original (J2517064001); Parent Lab Sample (J2517064001)

Parameter	Units	Spiked Amount	Spike Result	Spike Recovery	Control Limits	Dup Result	Dup Recovery	RPD	RPD Limit	Lab
Boron	mg/L	2	2.8	98	70 - 130	2.8	99	1	20	J
Calcium	mg/L	4	230	-149	70 - 130	240	91	4	20	J

Matrix Spike (6104072); Matrix Spike Duplicate (6104073); Original (J2517064001); Parent Lab Sample (J2517064001)

Parameter	Units	Spiked Amount	Spike Result	Spike Recovery	Control Limits	Dup Result	Dup Recovery	RPD	RPD Limit	Lab
Boron	mg/L	2	2.8	98	70 - 130	2.8	99	1	20	J
Calcium	mg/L	4	230	-149	70 - 130	240	91	4	20	J

Certificate of Analysis

This report shall not be reproduced, except in full,
 without the written consent of Advanced Environmental Laboratories, Inc.





FINAL

Workorder: CCR Compliance Sampling (J2517064)

QC Results

QC Batch: ICPJ/4806
Preparation Method: EPA 200.7
Associated Lab IDs: J2517064007, J2517064008

Analysis Method: EPA 200.7

Method Blank(6108296)

Parameter	Results	Units	PQL	MDL	Lab
Boron	0.10 U	mg/L	0.40	0.10	J
Boron	0.10 U	mg/L	0.40	0.10	J
Boron	0.10 U	mg/L	0.40	0.10	J
Calcium	0.20 U	mg/L	0.80	0.20	J
Calcium	0.20 U	mg/L	0.80	0.20	J
Calcium	0.20 U	mg/L	0.80	0.20	J

Lab Control Sample (6108297)

Parameter	Units	Spiked Amount	Spike Result	Spike Recovery	Control Limits	Lab
Boron	mg/L	2	2.1	103	85 - 115	J
Calcium	mg/L	4	4.2	105	85 - 115	J

Matrix Spike (6108298); Matrix Spike Duplicate (6108299); Original (J2517064007); Parent Lab Sample (J2517064007)

Parameter	Units	Spiked Amount	Spike Result	Spike Recovery	Control Limits	Dup Result	Dup Recovery	RPD	RPD Limit	Lab
Boron	mg/L	2	2	102	70 - 130	2	101	1	20	J
Calcium	mg/L	4	9.1	94	70 - 130	9.2	96	1	20	J

Matrix Spike (6108300); Matrix Spike Duplicate (6108301); Original (J2517263001); Parent Lab Sample (J2517263001)

Parameter	Units	Spiked Amount	Spike Result	Spike Recovery	Control Limits	Dup Result	Dup Recovery	RPD	RPD Limit	Lab
Boron	mg/L	2	2.1	107	70 - 130	2.1	103	3	20	J
Calcium	mg/L	4	77	67	70 - 130	76	54	1	20	J

Matrix Spike (6108298); Matrix Spike Duplicate (6108299); Original (J2517064007); Parent Lab Sample (J2517064007)

Parameter	Units	Spiked Amount	Spike Result	Spike Recovery	Control Limits	Dup Result	Dup Recovery	RPD	RPD Limit	Lab
Boron	mg/L	2	2	102	70 - 130	2	101	1	20	J
Calcium	mg/L	4	9.1	94	70 - 130	9.2	96	1	20	J

Matrix Spike (6108300); Matrix Spike Duplicate (6108301); Original (J2517263001); Parent Lab Sample (J2517263001)

Parameter	Units	Spiked Amount	Spike Result	Spike Recovery	Control Limits	Dup Result	Dup Recovery	RPD	RPD Limit	Lab
Boron	mg/L	2	2.1	107	70 - 130	2.1	103	3	20	J
Calcium	mg/L	4	77	67	70 - 130	76	54	1	20	J

Certificate of Analysis

This report shall not be reproduced, except in full,
 without the written consent of Advanced Environmental Laboratories, Inc.





FINAL

Workorder: CCR Compliance Sampling (J2517064)

QC Result Comments

Matrix Spike - 6108300 - Calcium

J4|Estimated Result

Matrix Spike Duplicate - 6108301 - Calcium

J4|Estimated Result

Certificate of Analysis

This report shall not be reproduced, except in full,
without the written consent of Advanced Environmental Laboratories, Inc.





FINAL

Workorder: CCR Compliance Sampling (J2517064)

QC Results

QC Batch: WCAj/21218 **Analysis Method:** EPA 300.0
Preparation Method: EPA 300.0
Associated Lab IDs: J2517064001, J2517064002, J2517064003, J2517064004

Matrix Spike (6095216); Matrix Spike Duplicate (6095217); Original (J2517072001); Parent Lab Sample (J2517072001)

Parameter	Units	Spiked Amount	Spike Result	Spike Recovery	Control Limits	Dup Result	Dup Recovery	RPD	RPD Limit	Lab
Fluoride	mg/L	2	2.4	112	90 - 110	2.5	114	1	10	J
Chloride	mg/L	20	95	91	90 - 110	95	92	0	10	J
Sulfate	mg/L	20	39	102	90 - 110	40	104	1	10	J





FINAL

Workorder: CCR Compliance Sampling (J2517064)

QC Results

QC Batch: WCAj/21218 **Analysis Method:** EPA 300.0
Preparation Method: EPA 300.0
Associated Lab IDs: J2517064001, J2517064002, J2517064003, J2517064004, J2517064005, J2517064006, J2517064007, J2517064008

Method Blank(6094673)

Parameter	Results	Units	PQL	MDL	Lab
Fluoride	0.20 U	mg/L	0.80	0.20	J
Chloride	2.0 U	mg/L	8.0	2.0	J
Sulfate	2.0 U	mg/L	8.0	2.0	J

Lab Control Sample (6094674)

Parameter	Units	Spiked Amount	Spike Result	Spike Recovery	Control Limits	Lab
Fluoride	mg/L	2	2.1	106	90 - 110	J
Chloride	mg/L	20	21	103	90 - 110	J
Sulfate	mg/L	20	19	97	90 - 110	J

Matrix Spike (6095337); Matrix Spike Duplicate (6095338); Original (J2517064004); Parent Lab Sample (J2517064004)

Parameter	Units	Spiked Amount	Spike Result	Spike Recovery	Control Limits	Dup Result	Dup Recovery	RPD	RPD Limit	Lab
Fluoride	mg/L	10	12	117	90 - 110	11	114	2	10	J
Chloride	mg/L	100	110	111	90 - 110	110	111	0	10	J
Sulfate	mg/L	100	1200	98	90 - 110	1200	84	1	10	J

QC Result Comments

Matrix Spike - 6095337 - Chloride

J4|Estimated Result

Matrix Spike - 6095337 - Fluoride

J4|Estimated Result

Matrix Spike Duplicate - 6095338 - Chloride

J4|Estimated Result

Matrix Spike Duplicate - 6095338 - Fluoride

J4|Estimated Result

Matrix Spike Duplicate - 6095338 - Sulfate

J4|Estimated Result

Certificate of Analysis

This report shall not be reproduced, except in full,
 without the written consent of Advanced Environmental Laboratories, Inc.





FINAL

Workorder: CCR Compliance Sampling (J2517064)

QC Cross Reference

Lab ID	Sample ID	Prep Batch	Prep Method
ICPj/4804 - EPA 200.7			
J2517064001	25-0621 MW-18	DGMj/11682	EPA 200.7
J2517064002	25-0622 MW-19	DGMj/11682	EPA 200.7
J2517064003	25-0623 MW-20	DGMj/11682	EPA 200.7
J2517064004	25-0624 MW-21	DGMj/11682	EPA 200.7
J2517064005	25-0632 MW-22	DGMj/11682	EPA 200.7
J2517064006	25-0633 MW-41AR	DGMj/11682	EPA 200.7
ICPj/4806 - EPA 200.7			
J2517064007	25-0634 MW-3A	DGMj/11698	EPA 200.7
J2517064008	25-0635 MW-5A	DGMj/11698	EPA 200.7
WCAj/21218 - EPA 300.0			
J2517064001	25-0621 MW-18		
J2517064002	25-0622 MW-19		
J2517064003	25-0623 MW-20		
J2517064004	25-0624 MW-21		
J2517064005	25-0632 MW-22		
J2517064006	25-0633 MW-41AR		
J2517064007	25-0634 MW-3A		
J2517064008	25-0635 MW-5A		
WCAj/21250 - SM 2540 C-2015			
J2517064001	25-0621 MW-18		
J2517064002	25-0622 MW-19		
J2517064003	25-0623 MW-20		
J2517064004	25-0624 MW-21		
J2517064005	25-0632 MW-22		
J2517064006	25-0633 MW-41AR		
J2517064007	25-0634 MW-3A		
J2517064008	25-0635 MW-5A		



Seminole Electric Cooperative, Inc. 890 Highway 17 North, Palatka, Florida 32177

Sample Number: 25 - 0621 Type of Sample: GRAB

Field I.D.: MW-18 Date & Time Sampled: 10/28/25 1115

Sampled by: *AT* Project I.D.: CCR Compliance Sampling

Sampling Equipment: Peristaltic Pump Sample Description: Groundwater

Weather Conditions:

LAB	ANALYSIS	RESULTS	UNITS	SECI Data & Q.C. Reviewed by:
AEL	Boron		µg/L	Date Reviewed:
AEL	Calcium		µg/L	Outside Lab Data & Q.C. Reviewed by:
AEL	Chloride		mg/L	Date Reviewed:
AEL	Fluoride		mg/L	pH (S.U.) 5.09 Date: <input checked="" type="checkbox"/>
AEL	Sulfate		mg/L	
AEL	TDS		mg/L	Cond. (umho) Date: <input type="checkbox"/>
				Temp. (Degrees C) 4.5 Date: <input type="checkbox"/>
				Initials: Time:
				TRO/FAO (mg/L) Date: <input type="checkbox"/>
				Initials: Time:
				Turbidity (NTU) Date: <input type="checkbox"/>
				Initials: Time:
				Depth (feet) Date: <input type="checkbox"/>
				Initials: Time:

All Field Q.C. Pass/Fail Initial: *AT* Date & Time: 10/28/25 1520

Sample Preparation Method: Total Metals

Common Carrier: AEL

Relinquished by: *AT* Date & Time: 10/28/25 1100

Contract Lab: AEL

Received by: *Shawdorn* Date & Time: 10/30/25 14:20

Relinquished by: Date & Time

Contract Lab: Date & Time

Received by: Date & Time

Total Number of Sample Containers: 2

Comments / Additional Requests:

- (1) 250 mL metals preserved w/ HNO3 to pH <2
- (1) 500 mL anions unpreserved

Profile #36214 (Line 9)

**INCLUDE CSV FILE STANDARD
AEL FORMAT**



Seminole Electric Cooperative, Inc.		890 Highway 17 North, Palatka, Florida 32177	
Sample Number: 25 - 0622		Type of Sample: GRAB	
Field I.D.: MW-19		Date & Time Sampled: 10/28/25 12:11	
Sampled by: AH		Project I.D.: CCR Compliance Sampling	
Sampling Equipment: Peristaltic Pump		Sample Description: Groundwater	
Weather Conditions:			
LAB	ANALYSIS	RESULTS	UNITS
AEL	Baron		µg/L
AEL	Calcium		µg/L
AEL	Chloride		mg/L
AEL	Fluoride		mg/L
AEL	Sulfate		mg/L
AEL	TDS		mg/L
SECI Data & Q.C. Reviewed by:			
Date Reviewed:			
Outside Lab Data & Q.C. Reviewed by:			
Date Reviewed:			
	pH (S.U.)	5.55	Date: <input checked="" type="checkbox"/>
	Cond. (umho)		Initials: Time:
	Temp. (Degrees C)	4.5	Date: Time:
	TRO/FAO (mg/L)		Initials: Time:
	Turbidity (NTU)		Date: Time:
	Depth (feet)		Initials: Time:
All Field Q.C. Pass/Fail Initial: AH Date & Time: 10/28/25 16:10			
Sample Preparation Method: Total Metals			
Common Carrier: AEL			
Relinquished by: AH Date & Time: 10/30/25 11:00			
Contract Lab: AEL			
Received by: Shaun Ryan Date & Time: 10/30/25 14:20			
Relinquished by:			
Contract Lab:			
Received by: Date & Time:			
Total Number of Sample Containers: 2			
Comments / Additional Requests:			
(1) 250 mL metals preserved w/ HNO3 to pH <2			
(1) 500 mL anions unpreserved			
Profile #36214 (Line 9)			
INCLUDE CSV FILE STANDARD AEL FORMAT			

Seminole Electric Cooperative, Inc.		890 Highway 17 North, Palatka, Florida 32177	
Sample Number: 25 - 0623		Type of Sample: GRAB	
Field I.D.: MW-20		Date & Time Sampled: 10/28/25 1421	
Sampled by: <i>AAA</i>		Project I.D.: CCR Compliance Sampling	
Sampling Equipment: Peristaltic Pump		Sample Description: Groundwater	
Weather Conditions:			
LAB	ANALYSIS	RESULTS	UNITS
AEL	Boron		µg/L
AEL	Calcium		µg/L
AEL	Chloride		mg/L
AEL	Fluoride		mg/L
AEL	Sulfate		mg/L
AEL	TDS		mg/L
SECI Data & Q.C. Reviewed by:			
Date Reviewed:			
Outside Lab Data & Q.C. Reviewed by:			
Date Reviewed:			
	pH (S.U.)	4.81	Date: <input checked="" type="checkbox"/>
	Cond. (umho)		Initials: Time:
	Temp. (Degrees C)	4.5	Date: Time:
	TRO/FAO (mg/L)		Initials: Time:
	Turbidity (NTU)		Date: Time:
	Depth (feet)		Initials: Time:
All Field Q.C. Pass/Fail Initial: <i>AAA</i> Date & Time: 10/29/25 1530			
Sample Preparation Method: Total Metals			
Common Carrier: AEL			
Relinquished by: <i>AAA</i> Date & Time: 10/30/25 1100			
Contract Lab: AEL			
Received by: <i>Shaun Lujan</i> Date & Time: 10/30/25 1420			
Relinquished by: Date & Time:			
Contract Lab:			
Received by: Date & Time:			
Total Number of Sample Containers: 2			
Comments / Additional Requests:			
(1) 250 mL metals preserved w/ HNO3 to pH <2			
(1) 500 mL anions unpreserved			
Profile #36214 (Line 9)			
INCLUDE CSV FILE STANDARD AEL FORMAT			

Seminole Electric Cooperative, Inc.		890 Highway 17 North, Palatka, Florida 32177	
Sample Number: 25 - 0624		Type of Sample: GRAB	
Field I.D.: MW-21		Date & Time Sampled: 10/29/25 15:11	
Sampled by: <i>AAH</i>		Project I.D.: CCR Compliance Sampling	
Sampling Equipment: Peristaltic Pump		Sample Description: Groundwater	
Weather Conditions:			
LAB	ANALYSIS	RESULTS	UNITS
AEL	Boron		µg/L
AEL	Calcium		µg/L
AEL	Chloride		mg/L
AEL	Fluoride		mg/L
AEL	Sulfate		mg/L
AEL	TDS		mg/L
SECI Data & Q.C. Reviewed by:			
Date Reviewed:			
Outside Lab Data & Q.C. Reviewed by:			
Date Reviewed:			
	pH (S.U.)	5.38	Date: <input checked="" type="checkbox"/>
	Cond. (umho)		Initials: _____ Time: _____
	Temp. (Degrees C)	45	Date: _____
	TRO/FAO (mg/L)		Initials: _____ Time: _____
	Turbidity (NTU)		Date: _____
	Depth (feet)		Initials: _____ Time: _____
All Field Q.C. Pass/Fail Initial: <i>AAH</i> Date & Time: 10/30/25 15:30			
Sample Preparation Method: Total Metals			
Common Carrier: AEL			
Relinquished by: <i>AAH</i> Date & Time 10/30/25 11:00			
Contract Lab: <i>AAH</i>			
Received by: <i>Alonso Lopez</i> Date & Time 10/30/25 14:20			
Relinquished by: _____ Date & Time _____			
Contract Lab: _____			
Received by: _____ Date & Time _____			
Total Number of Sample Containers: 2			
Comments / Additional Requests:			
(1) 250 mL metals preserved w/ HNO3 to pH <2			
(1) 500 mL anions unpreserved			
Profile #36214 (Line 9)			
INCLUDE CSV FILE STANDARD AEL FORMAT			

Seminole Electric Cooperative, Inc.		890 Highway 17 North, Palatka, Florida 32177	
Sample Number: 25 - 0632		Type of Sample: GRAB	
Field I.D.: MW-22		Date & Time Sampled: 10/25/05 1021	
Sampled by: AH		Project I.D.: CCR Compliance Sampling	
Sampling Equipment: Peristaltic Pump		Sample Description: Groundwater	
Weather Conditions:			
LAB	ANALYSIS	RESULTS	UNITS
AEL	Boron		µg/L
AEL	Calcium		µg/L
AEL	Chloride		µg/L
AEL	Fluoride		µg/L
AEL	Sulfate		µg/L
AEL	TDS		µg/L
SECI Data & Q.C. Reviewed by:			
Date Reviewed:			
Outside Lab Data & Q.C. Reviewed by:			
Date Reviewed:			
	pH (S.U.)	6.69	Date: <input checked="" type="checkbox"/>
	Cond. (µmho)		Initials: Time:
	Temp. (Degrees C)	45	Date: Time:
	TRO/FAO (mg/L)		Initials: Time:
	Turbidity (NTU)		Date: Time:
	Depth (feet)		Initials: Time:
All Field Q.C. Pass/Fail Initial: AH Date & Time: 10/29/05 1830			
Sample Preparation Method: Total Metals			
Common Carrier: AEL			
Relinquished by: AH Date & Time: 10/26/05 1100			
Contract Lab: AEU			
Received by: Skanderson Date & Time: 10/30/05 14:20			
Relinquished by: Date & Time:			
Contract Lab: Date & Time:			
Received by: Date & Time:			
Total Number of Sample Containers: 2			
Comments / Additional Requests:			
(1) 250 mL metals preserved w/ HNO3 to pH <2			
(1) 500 mL anions unpreserved			
Profile #36214 (Line 9)			
INCLUDE CSV FILE STANDARD AEL FORMAT			

Seminole Electric Cooperative, Inc. 890 Highway 17 North, Palatka, Florida 32177

Sample Number: 25 - 0613 Type of Sample: GRAB

Field I.D.: MW-41AR Date & Time Sampled: 10/28/25 1107

Sampled by: [Signature] Project I.D.: CCR Compliance Sampling

Sampling Equipment: Well Wizard / Bladder Pump Sample Description: Groundwater

Weather Conditions:

LAB	ANALYSIS	RESULTS	UNITS	SECI Data & Q.C. Reviewed by:	
AEL	Brom		µg/L	Date Reviewed:	
AEL	Calcium		µg/L	Outside Lab Data & Q.C. Reviewed by:	
AEL	Chloride		mg/L	Date Reviewed:	
AEL	Fluoride		mg/L		
AEL	Sulfate		mg/L	pH (S.U.)	4.87
AEL	TDS		mg/L	Cond. (umho)	
				Temp. (Degrees C)	4.5
				TRO/FAO (mg/L)	
				Turbidity (NTU)	
				Depth (feet)	
				All Field Q.C. Pass/Fail Initial:	ALL
				Date & Time:	10/28/25 1540
Sample Preparation Method: Total Metals					
Common Carrier: AEL					
Relinquished by:				[Signature]	Date & Time: 10/28/25 1100
Contract Lab: ASA					
Received by:				[Signature]	Date & Time: 10/30/25 14:20
Relinquished by:					
Contract Lab:					
Received by:					
Total Number of Sample Containers: 2					
Comments / Additional Requests:					
(1) 250 mL metals preserved w/ HNO3 to pH <2					
(1) 500 mL anions unpreserved					
Profile #36214 (Line 9)					
INCLUDE CSV FILE STANDARD AEL FORMAT					

Seminole Electric Cooperative, Inc.		890 Highway 17 North, Palatka, Florida 32177	
Sample Number: 25 - 0624		Type of Sample: GRAB	
Field I.D.: MW-3A		Date & Time Sampled: 10/29/25 1404	
Sampled by: AH		Project I.D.: CCR Compliance Sampling	
Sampling Equipment: Well Wizard / Bladder Pump		Sample Description: Groundwater	
Weather Conditions:			
LAB	ANALYSIS	RESULTS	UNITS
AEL	Boron		µg/L
AEL	Calcium		µg/L
AEL	Chloride		mg/L
AEL	Fluoride		mg/L
AEL	Sulfate		mg/L
AEL	TDS		mg/L
SECI Data & Q.C. Reviewed by:			
Date Reviewed:			
Outside Lab Data & Q.C. Reviewed by:			
Date Reviewed:			
	pH (S.U.)	4.42	Date: <input checked="" type="checkbox"/>
	Cond. (umho)		Initials: Time:
	Temp. (Degrees C)	4.5	Date: Time:
	TRO/FAO (mg/L)		Initials: Time:
	Turbidity (NTU)		Date: Time:
	Depth (feet)		Initials: Time:
All Field Q.C. Pass/Fail Initial: AH Date & Time: 10/29/25 1520			
Sample Preparation Method: Total Metals			
Common Carrier: AEL			
Relinquished by: AH Date & Time: 10/30/25 1100			
Contract Lab: AEL			
Received by: Steve Lyle Date & Time: 10/30/25 14:20			
Relinquished by: Date & Time:			
Contract Lab:			
Received by: Date & Time:			
Total Number of Sample Containers: 2			
Comments / Additional Requests:			
(1) 250 mL metals preserved w/ HNO3 to pH <2			
(1) 500 mL anions unpreserved			
Profile #36214 (Line 9)			
INCLUDE CSV FILE STANDARD AEL FORMAT			

Seminole Electric Cooperative, Inc.		890 Highway 17 North, Palatka, Florida 32177	
Sample Number: 25 - 0635		Type of Sample: GRAB	
Field I.D.: MW-5A		Date & Time Sampled: 10/29/25 1433	
Sampled by: <i>MT</i>		Project I.D.: CCR Compliance Sampling	
Sampling Equipment: Well Wizard / Bladder Pump		Sample Description: Groundwater	
Weather Conditions:			
LAB	ANALYSIS	RESULTS	UNITS
AEL	Boron		µg/L
AEL	Calcium		µg/L
AEL	Chloride		mg/L
AEL	Fluoride		mg/L
AEL	Sulfate		mg/L
AEL	TDS		mg/L
SECI Data & Q.C. Reviewed by:			
Date Reviewed:			
Outside Lab Data & Q.C. Reviewed by:			
Date Reviewed:			
	pH (S.U.)	5.15	Date: <input checked="" type="checkbox"/> Initials: _____ Time: _____
	Cond. (umho)		Date: _____ Initials: _____ Time: _____
	Temp. (Degrees C)	4.5	Date: _____ Initials: _____ Time: _____
	TROFAO (mg/L)		Date: _____ Initials: _____ Time: _____
	Turbidity (NTU)		Date: _____ Initials: _____ Time: _____
	Depth (feet)		Date: _____ Initials: _____ Time: _____
All Field Q.C. <i>Pass/fail</i> Initial: <i>MT</i> Date & Time: 10/29/25 1530			
Sample Preparation Method: Total Metals			
Common Carrier: AEL			
Relinquished by: <i>MT</i> Date & Time 10/30/25 1100			
Contract Lab: AEL			
Received by: <i>Handover</i> Date & Time 10/30/25 1420			
Relinquished by: _____ Date & Time _____			
Contract Lab: _____			
Received by: _____ Date & Time _____			
Total Number of Sample Containers: 2			
Comments / Additional Requests:			
(1) 250 mL metals preserved w/ HNO3 to pH <2			
(1) 500 mL anions unpreserved			
Profile #36214 (Line 9)			
INCLUDE CSV FILE STANDARD AEL FORMAT			



Sample Receiving Checklist

- JAX TPA MIA ALS
- FTM GNV LPD SEM



Client: Seminole Electric Corp. Log-In request number: JL01
 Received by: S.L. Project name: CCR Compliance Sampling
 Date/Time: 10/30/25 11:14:20 Completed by: K.P.

Cooler/Shipping Information: Type: Cooler Box Other (describe) _____
 Courier: AEL Client UPS Blue Streak FedEx Other Tracking # _____

Cooler temperature: Identify the cooler and document the temperature blank (bottle) or ice water (cooler) measurement

Cooler/Container ID	Temp (°C)	Temp taken from	Temp measured with					
1	0.8	<input checked="" type="checkbox"/> Bottle <input type="checkbox"/> Cooler	IR gun/Therm (ID): JPA	<input type="checkbox"/> Bottle <input type="checkbox"/> Cooler	<input type="checkbox"/> Bottle <input type="checkbox"/> Cooler	<input type="checkbox"/> Bottle <input type="checkbox"/> Cooler	<input type="checkbox"/> Bottle <input type="checkbox"/> Cooler	<input type="checkbox"/> Bottle <input type="checkbox"/> Cooler

Other Information: Any discrepancies should be explained in the "Comments" section below.

CHECKLIST				YES	NO	NA
1. Were custody seals on shipping container(s) intact?				x		
2. Were custody papers properly included with samples?				x		
3. Were custody papers properly filled out (ink, signed, match labels)?				x		
4. Did all bottles arrive in good condition (unbroken)?				x		
5. Were all bottle labels complete (sample #, date, signed, analysis, preservatives)?				x		
6. Did the sample labels agree with the chain of custody?				x		
7. Were correct bottles used for the tests indicated?				x		
8. Were proper sample preservation techniques indicated on the label?				x		
9. Were samples received within holding times?				x		
10. Were all VOA vials free of the presence of air bubbles?						x
11. Have all Soil VOA Vials and Encores been placed in a freezer within 48 hours of collection?						x
12. Were samples in direct contact with wet ice? If "No," check one: # NO ICE # BLUE ICE				x		
13. Was the cooler temperature less than 6°C?				x		
14. Where pH preservation required, are sample pHs checked and any anomalies recorded by Sample control? Are all <2 or >10? Note: VOA samples are checked by laboratory analysts.				x		
15. Was sufficient sample volume provided to perform all tests?				x		
16. If for Bacteriological testing, were containers supplied by AEL? (See QA officer if answer is no)						x
17. Were all sample containers provided by AEL? (Other than Bacteriological)				x		
18. Were samples accepted into the laboratory?				x		
19. When necessary to split samples into other bottles, is it noted in the comments?				x		
20. Where Encores received and if so, how many?					x	

Comments: (Note all sample(s) and container (s) with a "No" checklist response in this comment section)